

OPERATORS MANUAL
&
PARTS BOOK

500 Bushel
Gravity Wagon



1050 E. COLUMBIA
P.O. BOX 168
ARTHUR, IL 61911

TOLL FREE: 800-677-2802
PHONE: 217-543-3471
WWW.E-ZTRAIL.COM

WARNINGS, INSTRUCTIONS & MAINTENANCE

Never allow anyone in, near or on the gravity box during transporting or unloading grain. Moving grain is dangerous and can cause entrapment, resulting in severe injury or death by suffocation.

Do not operate on public roads unless equipped with proper lighting or warning devices. It is the responsibility of the user & owner to install & use lighting, safety chains, or other equipment as required by state & federal laws.

Make sure that the gravity box is properly fastened to the running gear.

All sizes of tires should be inflated to approx. 55 PSI. Use of truck tires at higher pressures is not recommended, as hard tires do not provide sufficient cushion for the protection of wheels, hubs, and spindles.

Before first use, then annually, check wheel bearings for sufficient grease & proper adjustment.

Regularly grease front spindles, tie rod ends, tongue bolt, steering frame, hand wheel, & pivot shaft.

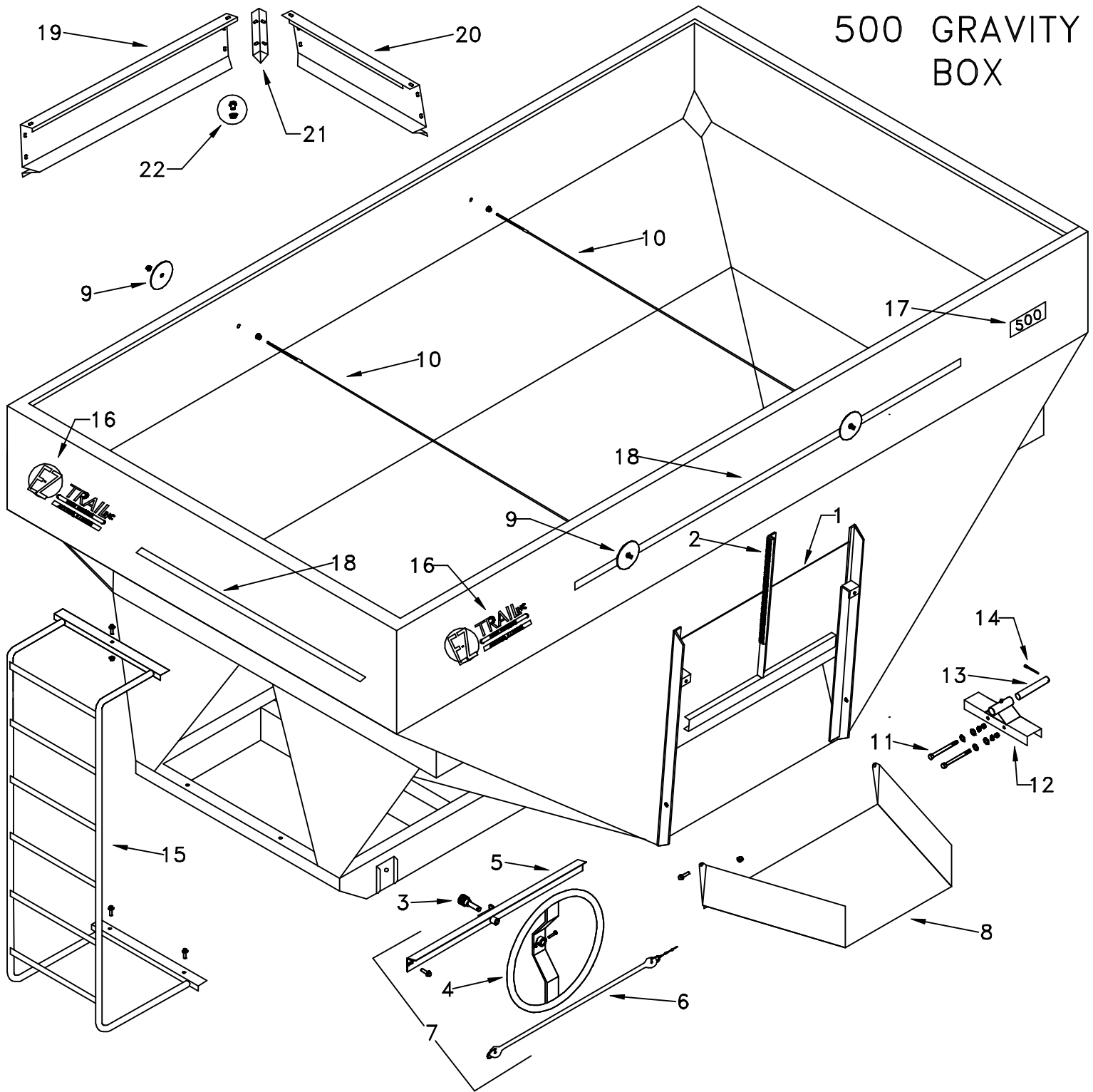
Check wheel nuts for proper torque before first use, after first load, and then periodically. (200 lbs/ft on 1585)

Proper wheel offset is very important. If factory-provided wheels are not used, make certain there is no more than 1" space between inside of tire & ends of front axle.

If you have further questions, please call us at 217-543-3471.

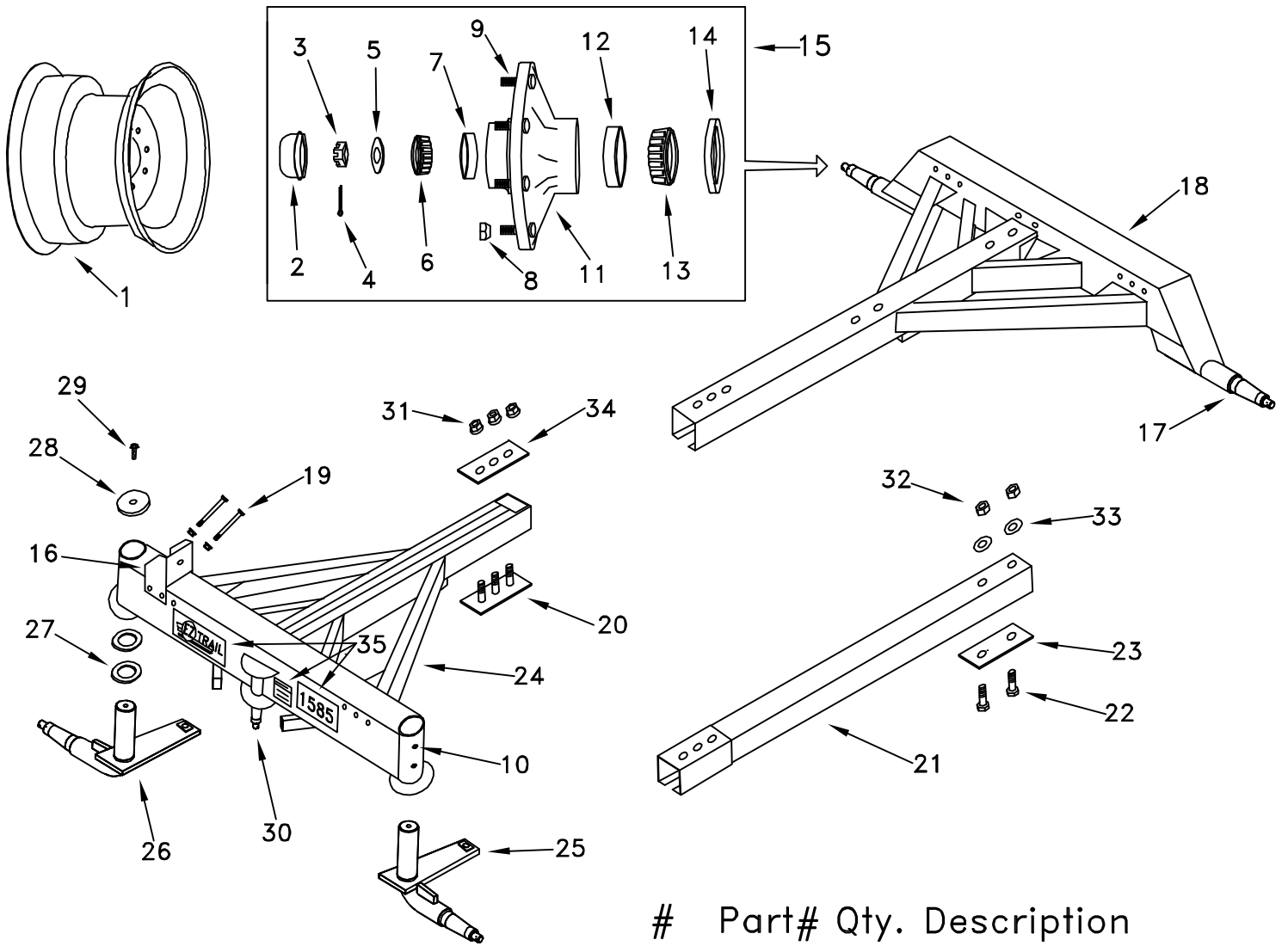
Parts may be ordered online at www.e-ztrail.com, where you may also download additional copies of this manual.

500 GRAVITY BOX



#	Part#	Qty.	Description	#	Part#	Qty.	Description
1	4536	1	Door w/Rack	12	4531	1	5" Pivot
2	4537	1	Machined Pinion Rack	13	4533	1	Pivot Shaft
3	4541	1	13 Tooth Mach. Pinion Gear	14	4333	1	Cotter Pin
4	4546	1	Handwheel	15	4511	1	Ladder
5	4548	1	38" Crossbar	16	4305	4	E-Z Trail Decal
6	4249	1	Rubber Strap	17	4508	2	Model 500 Decal
7	4550	1	Handwheel Assembly	18	50255	1	Striping - 11 Ft.
8	4532	1	Chute	19	4558	2	18" X 14' Ext'n Side
9	4327	6	4" Washer	20	4557	2	18" X 8'6" Ext'n End
10	4335	2	Cross Cable Assembly	21	4359	4	18" Corner Angle
11		2	1/2 X 7-1/2 Bolt	22	4255	1	Bag of 3/8 X 3/4 Bolts

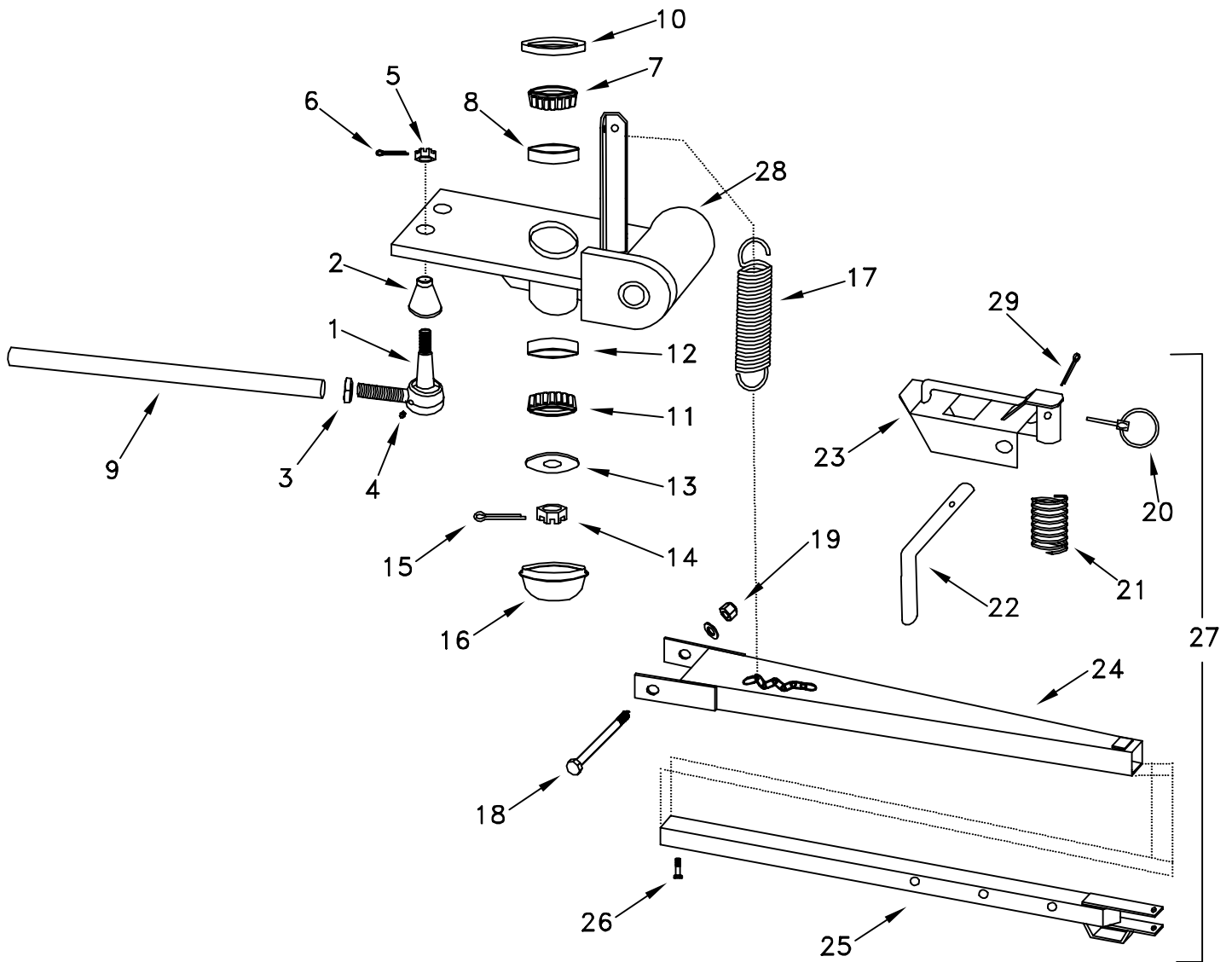
E-Z Trail 1585 Gear



#	Part#	Qty.	Description
1	1595	4	16.1x14-8 Wheel
1	1354	4	Opt. 22.5x13.5-8 Wheel
2	1552	4	Hub Cap
3	1551	4	1-14 Slotted Nut
4	1545	4	Cotter Pin
5	1550	4	Spindle Washer
6	1030	4	Outer Bearing
7	1031	4	Outer Race
8	1565	32	Wheel Nut
9	1564	32	Wheel Stud
10	1093	8	Grease Zerk
11	1532	4	Hub w/Races
11	1533	2	Brake Hub w/Races
12	1585	4	Inner Race
13	1584	4	Inner Bearing
14	1529	4	Grease Seal
15	1534	4	Hub Ass'y
15	1535	2	Brake Hub Ass'y

#	Part#	Qty.	Description
16	1569	4	Stake Pocket
17	1525	2	Rear Spindle
18	1506	1	Rear Axle w/Spindles
19	1572	8	3/8 x 7 Stake Bolt & Nut
20	1504	1	Reach Clamp
21	1539	1	Opt: Square Center Reach
22	1006	2	3/4 x 1-3/4 Bolt
23	1005	1	Spacer Plate
24	1505	1	Front Axle
25	1531	1	Left Front Spindle
26	1530	1	Right Front Spindle
27	1522	4	Machinery Bushing
28	1523	2	Bent Spindle Cap
29	1520	2	Spindle Cap Screw
30	1579	1	Steering Spindle Ass'y
31	1007	3	3/4-16 Flange Nut
32	1012	2	3/4-10 Lock Nut
33	1015	2	3/4 Flat Washer
34	1524	1	Reach Clamp Plate
35	1577	1	Decal Set

E-Z Trail Steering Ass'y for 15 Ton Gears



#	Part#	Qty.	Description
1	1592	4	Tie Rod End Ass'y (Inc'd 2-6)
2	1543	4	Rubber Cover
3	1588	4	1-16 Jam Nut
4	1094	4	Grease Zerk
5	641	4	5/8-18 Slotted Nut
6	1046	4	Cotter Pin
7	1385	1	Top Steer. Frame Bearing
8	1384	1	Top Steer Frame Race
9	1527	2	Tie Rod
10	1578	1	Steering Frame Seal
11	1030	1	Bottom Steer. Frame Bearing
12	1031	1	Bottom Steering Frame Race
13	1550	1	Washer
14	1551	1	3/4-16 Slotted Nut
15	1545	1	Cotter Pin
16	1552	1	Steering Frame Cap
17	1013	1	Spring
18	1514	1	Tongue Bolt
19	1596	1	1-8 Lock Nut
20	1017	1	Lock Pin
21	1010	1	Spring
22	1511	1	Latch Pin
23	1516	1	Latch
24	1560	1	Tongue Outer
25	1561	1	Tongue Inner
26	1562	1	3/4-10 x 1 Bolt
27	1567	1	E-Z Hitch Ass'y
28	1580	1	Steering Frame w/Races
29	1045	1	Cotter Pin

Instructions for 13” Brakes

1. Adjusting Brakes

The brake adjustment nut is located through a slot at the bottom of the backing plate. Insert brake tool or screw driver into slotted hole with handle up and bit against the adjusting wheel, pull down on handle and rotate wheel while tightening. When you can no longer rotate wheel, back off the tightener 15-20 clicks on the adjuster wheel. If there is one spot where the wheel drags just slightly this is acceptable. As soon as the brake linings are burnished (this requires several braking stops) the brakes will then be set right.

ALWAYS ROTATE DRUM IN DIRECTION OF FORWARD ROTATION ONLY.

2. Hydraulic Lines

Use care in forming tubing to avoid sharp bends or kinks. Use double flare steel tubing to assure tight leak-proof connections. This must be done by a certified brake shop. Anchor all hydraulic lines at two foot intervals to prevent chafing and vibration. Use hydraulic rubber hose at points of flexing. Anchor hose ends to avoid stress on tubing.

3. Bleeding the System

The first requirement for safe, sure hydraulic braking is the use of quality brake fluid. Use only DOT-3 or DOT-4 brake fluid from a sealed container.

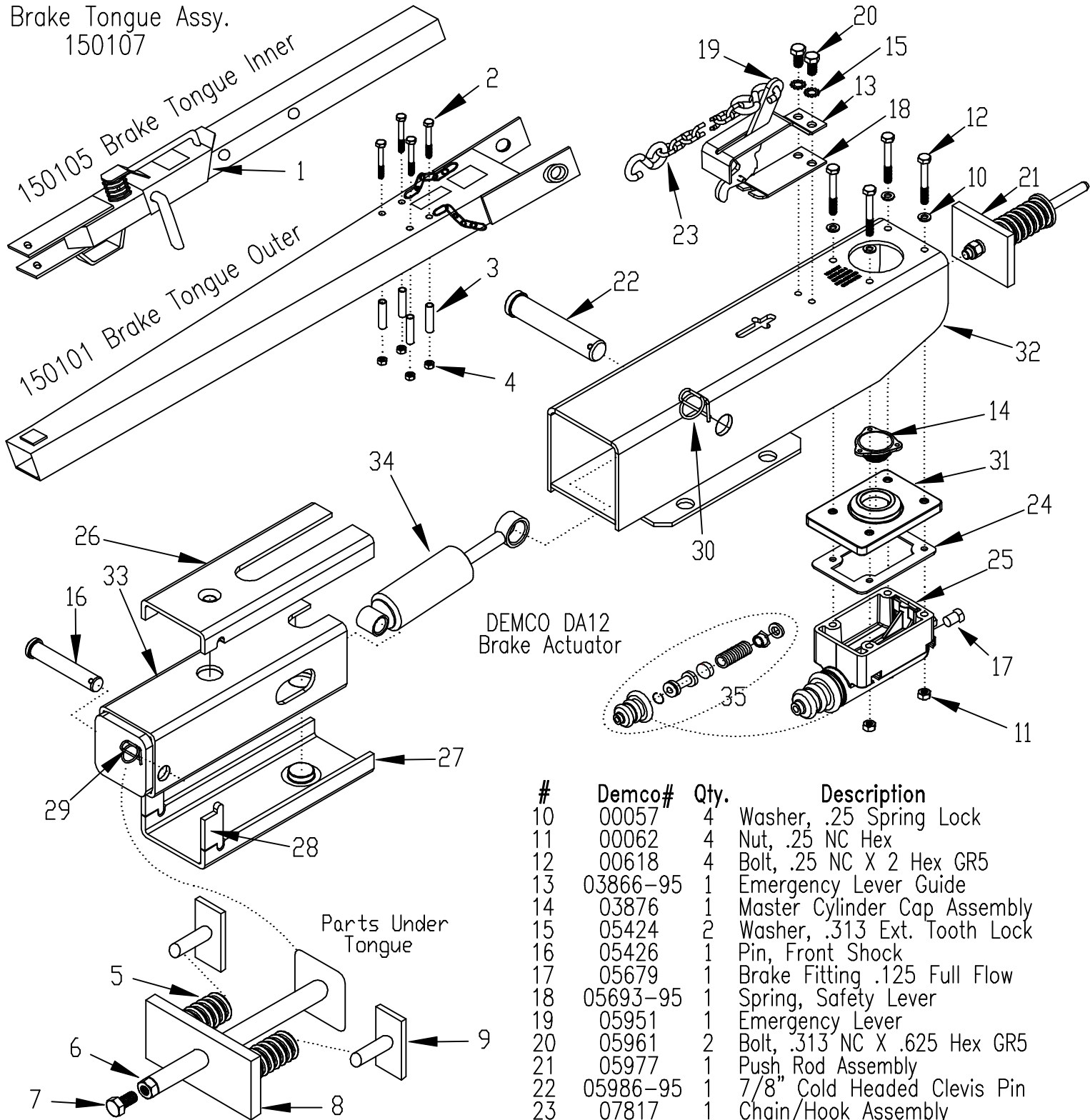
If pressure bleeding equipment is available, follow the manufacturer's instruction in bleeding the system. **If system must be bled manually, proceed as follows:** Fill master cylinder with fluid. Install bleeder hose on first wheel cylinder to be bled. Have loose end of hose submerged in brake fluid in glass container to observe bubbling.

By loosening the bleeder screw located in the wheel cylinder one turn, the system is open to the atmosphere through the passage drilled in the screw. Pump actuator with short strokes until fluid in master cylinder reservoir stops blubbing, and then pump actuator with long steady strokes. The bleeding operation is completed when bubbles no longer rise to the surface of the fluid in glass container. **Be sure to close bleeder screw securely.**

Repeat bleeding operation at each wheel cylinder. During the bleeding process, replenish the brake fluid, so the level does not fall below the 1/2 full level in the master cylinder reservoir. After bleeding is complete, make sure master cylinder reservoir is filled and filler cap is securely in place. Finally, apply pressure to the system and check the whole brake system for leaks.

Brake Tongue & Actuator

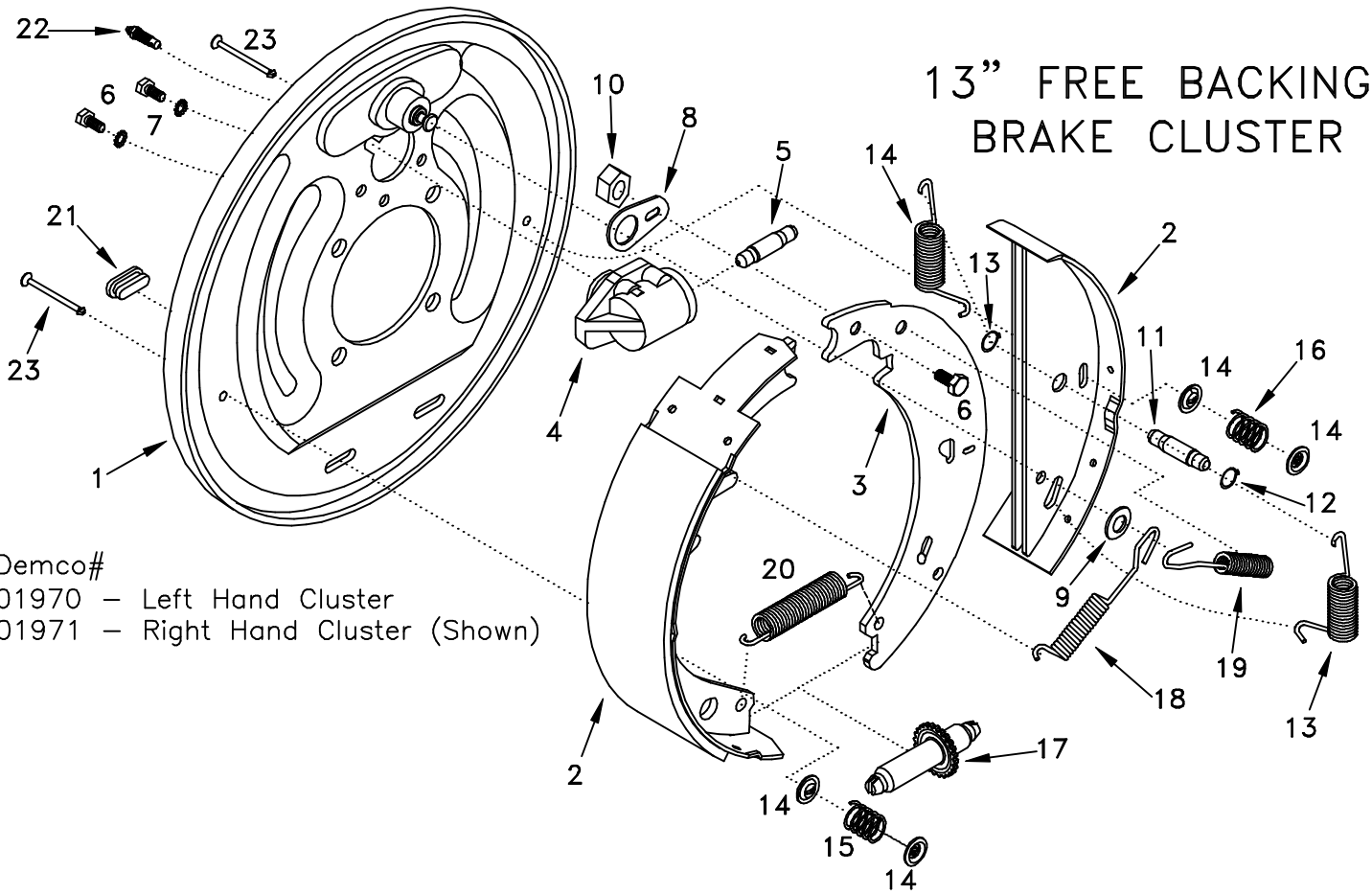
Brake Tongue Assy.
150107



#	Part#	Qty.	Description
1	150102	1	Brake Tongue Latch
2	100172	4	5/8-11 X 5" Bolt
3	100171	4	Attachment Spacer
4	100170	1	5/8-11 Locknut
5	1010	2	Spring
6	234	1	9/16-18 Jam Nut
7	100365	1	9/16-18 X 1-1/4" Bolt
8	100366	1	Actuator Push Rod
9	100367	2	Spring Holder

#	Demco#	Qty.	Description
10	00057	4	Washer, .25 Spring Lock
11	00062	4	Nut, .25 NC Hex
12	00618	4	Bolt, .25 NC X 2 Hex GR5
13	03866-95	1	Emergency Lever Guide
14	03876	1	Master Cylinder Cap Assembly
15	05424	2	Washer, .313 Ext. Tooth Lock
16	05426	1	Pin, Front Shock
17	05679	1	Brake Fitting .125 Full Flow
18	05693-95	1	Spring, Safety Lever
19	05951	1	Emergency Lever
20	05961	2	Bolt, .313 NC X .625 Hex GR5
21	05977	1	Push Rod Assembly
22	05986-95	1	7/8" Cold Headed Clevis Pin
23	07817	1	Chain/Hook Assembly
24	09153	1	Cork Gasket for Master Cyl.
25	10616	1	Composite Master Cyl. Drum
26	10965	1	Slide Channel Top
27	10966	1	Slide Channel Bottom
28	10967	2	Slider Spacer
29	12396	1	5/8" Rue Ring Lock Cotter
30	12397	1	7/8" Rue Ring Lock Cotter
31	12557	1	Cap for Master Cylinder
32	13239-30	1	Outer Case DA12
33	13240-30	1	Inner Slide Tube DA12
34	SB12426	1	Shock, Damper
35	5398	1	Cylinder Repair Kit, w/Boot 05687

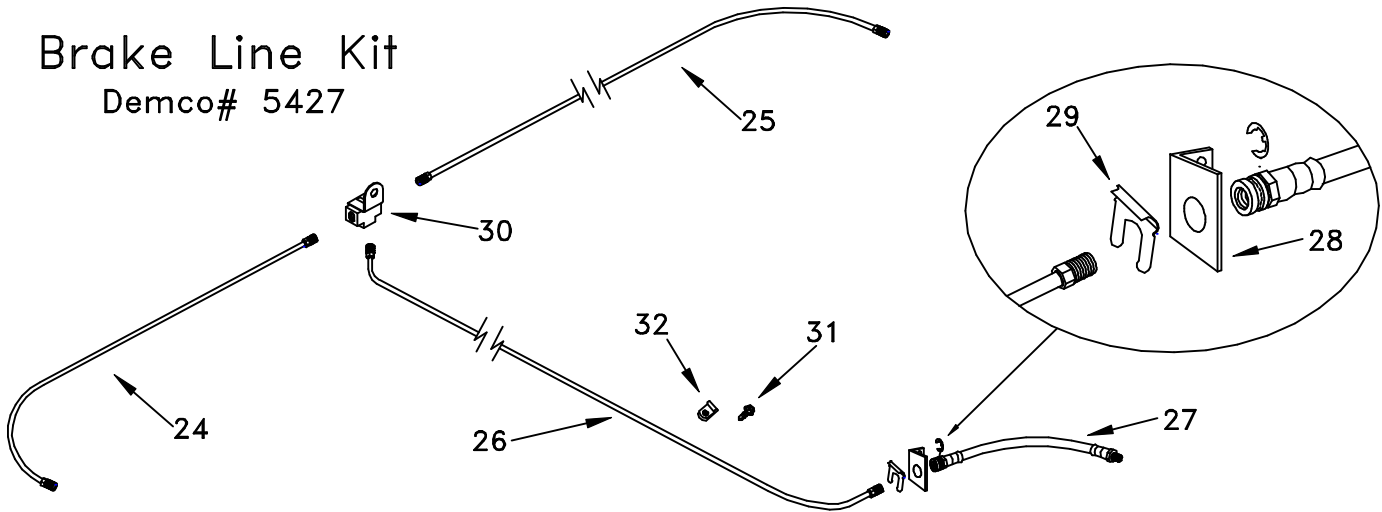
13" FREE BACKING BRAKE CLUSTER



Demco#
 01970 - Left Hand Cluster
 01971 - Right Hand Cluster (Shown)

Brake Line Kit

Demco# 5427



#	Demco#	Qty.	Description	#	Demco#	Qty.	Description
1	03529-30	1	Back Plate Assembly	17	SB23324	2	Adjusting Screw Assembly
2	5508	1	Brake Shoe Kit	18	SB9786	1	Spring - Shoe
3	SB9745-95	1	Shoe Lever	19	SB9785	1	Spring - Return Lever
4	SB9776	1	Right Wheel Cylinder Ass'y	20	SB24765	1	Spring - Adjusting Screw
	SB9777	1	Left Wheel Cylinder Ass'y	21	SB9254	1	Cover Plate - Adjusting Hole
5	SB9783	1	Push Rod	22	05431	1	Bleeder - Replacement
6	05961	1	5/16-18 X 5/8" Bolt	23	SB9788	1	#6 Hold Down Pin
7	05424	1	5/16" Ext. Tooth Washer	24	SB517	1	17" ZT Brake Line
8	03559-95	1	Travel Link	25	SB572	1	72" ZT Brake Line
9	00205	2	Washer - Shoe Guide	26	SB5193	1	193" ZT Brake Line
10	05962	1	5/16-18 Bi-Way Locknut	27	05982	1	18-7/8" Brake Hose
11	05824-95	1	Double Pin - Shoe		PBG5402	1	Bag of Parts #28-32
12	SB7778	1	Retaining Ring	28	05981-95	1	Brake Line Hose Bracket
13	SB6814	1	Spring - Shoe Return	29	SB7764	1	Retainer Clip
14	SB9789	1	Cup - Shoe Hold Down	30	SB7785	1	3/16" Brake Tee
15	05983	1	Spring - Shoe Hold Down BLUE	31	03787	4	#10-16 X 1/2 Self-Drill Screw
16	SB9790	1	Spring - Shoe Hold Down MAROON	32	05378	4	Brake Line Control Clip