

OPERATORS MANUAL
&
PARTS BOOK

870 & 1020

GRAIN CART



1050 E. COLUMBIA
P.O. BOX 168
ARTHUR, IL 61911

TOLL FREE: 800-677-2802
PHONE: 217-543-3471
WWW.E-ZTRAIL.COM

WARNING

Do not attempt to clean, adjust, lubricate, or enter the grain cart while any part is in operation.

Do not start the machine without all guards & shields in place & in good working condition.

Do not operate on public roads unless equipped with proper lighting or warning devices. It is the responsibility of the user & owner to install lighting or other equipment as required by state & federal laws.

Do not allow children to play on or around the grain cart.

OPERATION

The indicator flag in front of the auger shows the position of the inner door.

When engaging the PTO, the door should be closed & and the tractor should be running at low RPM's to prolong the life of the driveline & gearbox.

With the auger running, open the door to begin unloading grain. Do not exceed 750 PTO RPM for maximum efficiency & auger life.

When the cart is nearly empty, the door can be partially closed to provide better clean out.

Over tightening of the shear bolt on the front PTO yoke creates excessive friction, which drastically increases shear torque and can damage or result in premature failure of the gearbox. Always use a locknut on the shearbolt and leave the nut loose enough that you can turn the bolt with your fingers.

The top auger must remain locked in the unloading position while the PTO is engaged. Folding the top auger while the auger is turning can cause damage to the augers.

Check wheel nuts for proper torque before first use, after first load, and then periodically. (400 ft lbs on 870, 550 ft lbs on 1020)

MAINTENANCE

Grease regularly:

- PTO Shaft
- U-joint at Gearbox
- Bearing at Top of Lower Auger
- Bearing at Top of Top Auger
- Auger Hinge
- Auger Over-Center Lock
- Hitch Swivel Ball

Recommended Tire Inflations:

	<i>PSI</i>
30.5-32, 12 ply on 870.....	30
30.5-32, 18 ply on 1020.....	45
900/60R32.....	47

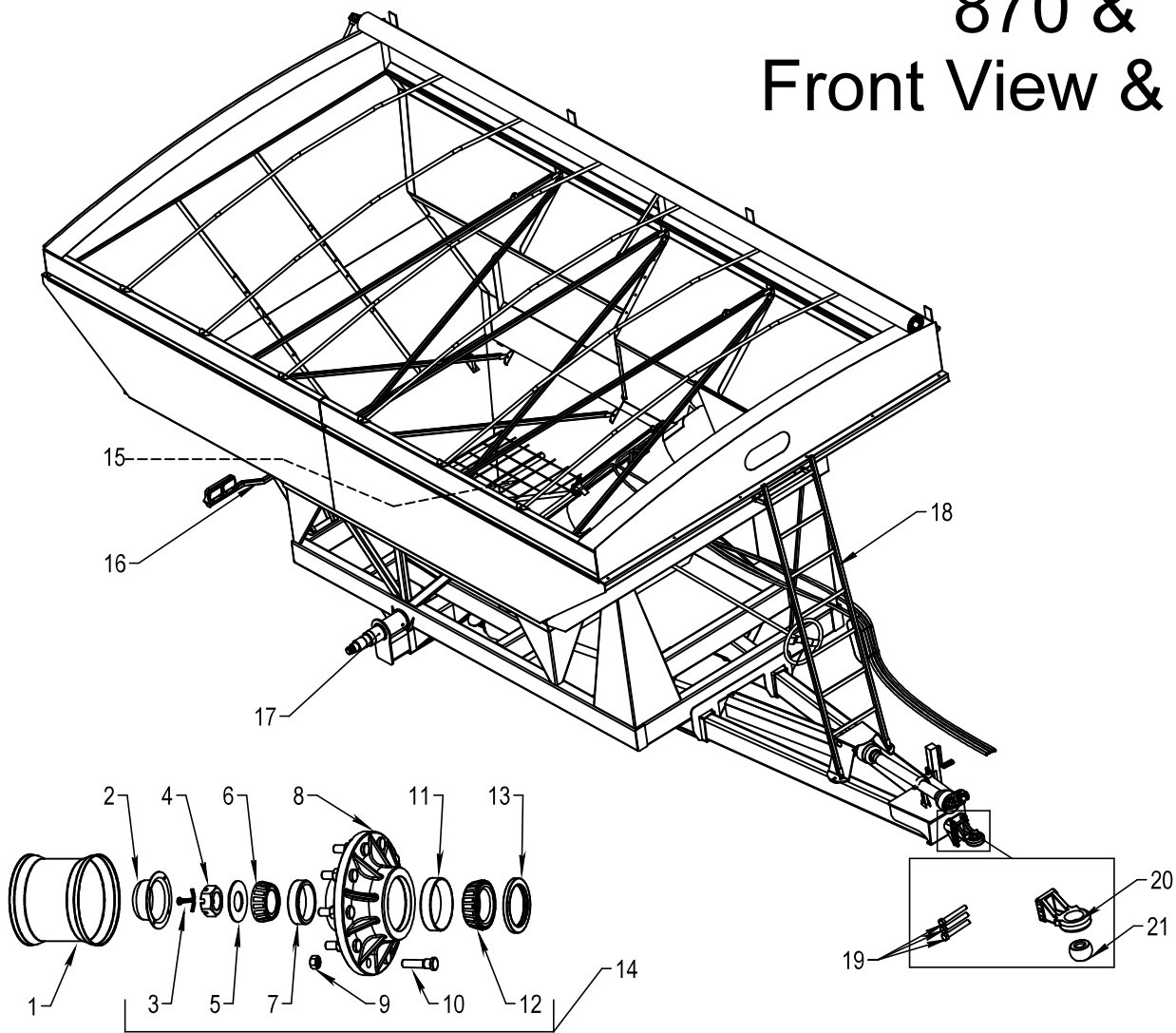
Before first use, then annually:

- Check gearbox oil level, use 90W oil.
- Check wheel bearings for sufficient grease & proper adjustment.

If you have further questions, please call us at 217-543-3471.

Parts may be ordered online at www.e-ztrail.com, where you may also download additional manuals.

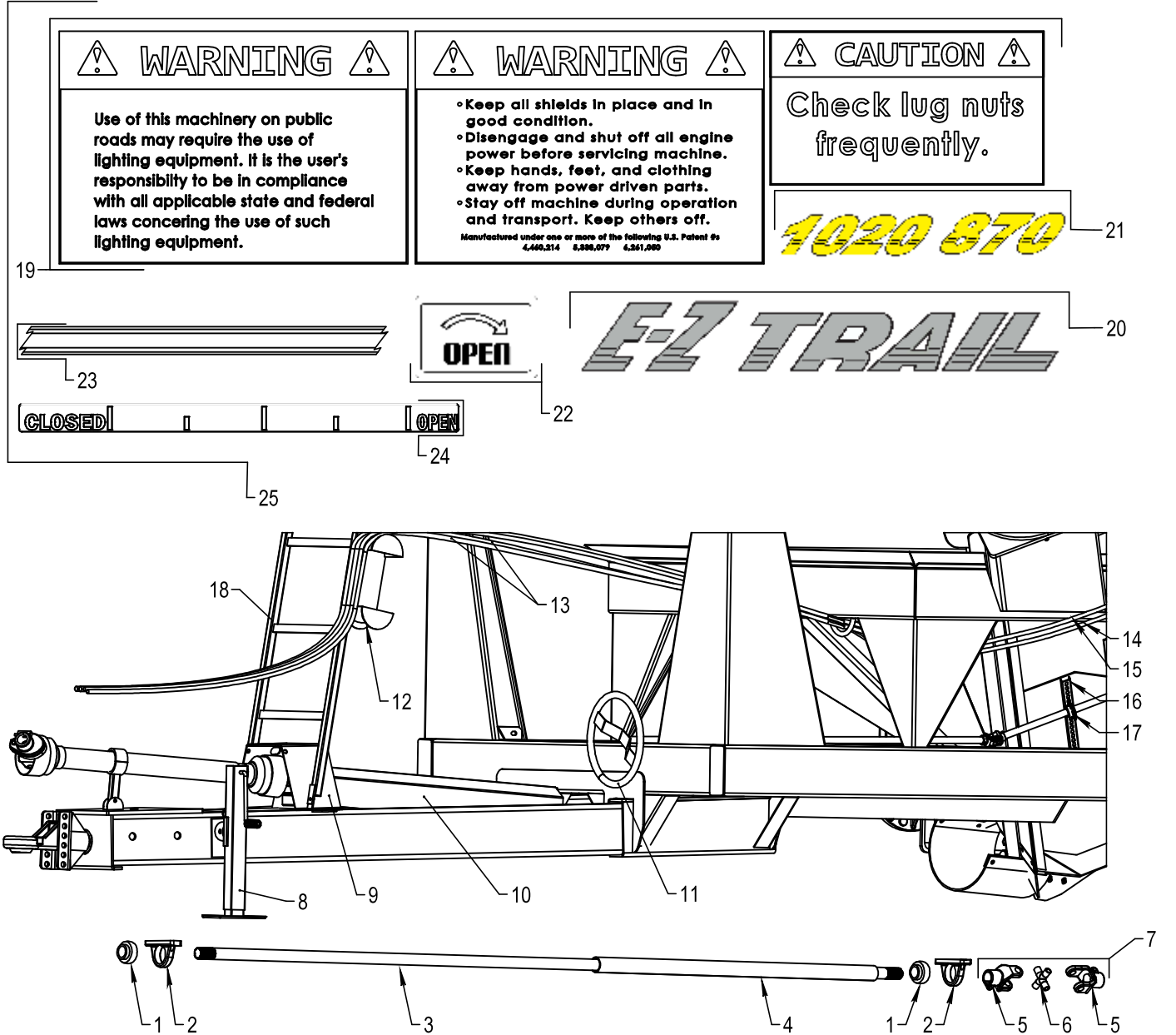
870 & 1020 Front View & Hub



#	Part #	Qty.	Description
1	50627 51627	2	32 x 27 - 30.5 - 870 32 x 27 - 900/60R32 - 1020
2	50653	2	Hub Cap
3	50656	2	Cotter Pin
4	50652	2	Slotted Nut
5	50651	2	Washer
6	50659	2	Outer Bearing
7	50611	2	Outer Race
8	50649 51649	2	Hub 870 Hub 1020
9	50655 51655	20	Wheel Nut 3/4 - 870 Wheel Nut 22m - 1020
10	50542 51542	20	Wheel Stud 3/4 - 870 Wheel Stud 22m - 1020

11	50610	2	Inner Race
12	50648	2	Inner Bearing
13	50671	2	Grease Seal
14	50658 51658	2	Hub Assy. 870 Hub Assy. 1020
15	51178	1	Safety Gate
16	56129	2	Light Bar
17	51650	2	Spindle
18	51138	1	Ladder
19	51475	3	3/4 - 16 x 5 1/2 " Bolt
20	51710	1	Cast Ball Hitch
21	51712 51712	1 Opt.	Hitch Ball 1-1/2" ID Hitch Ball 2" ID

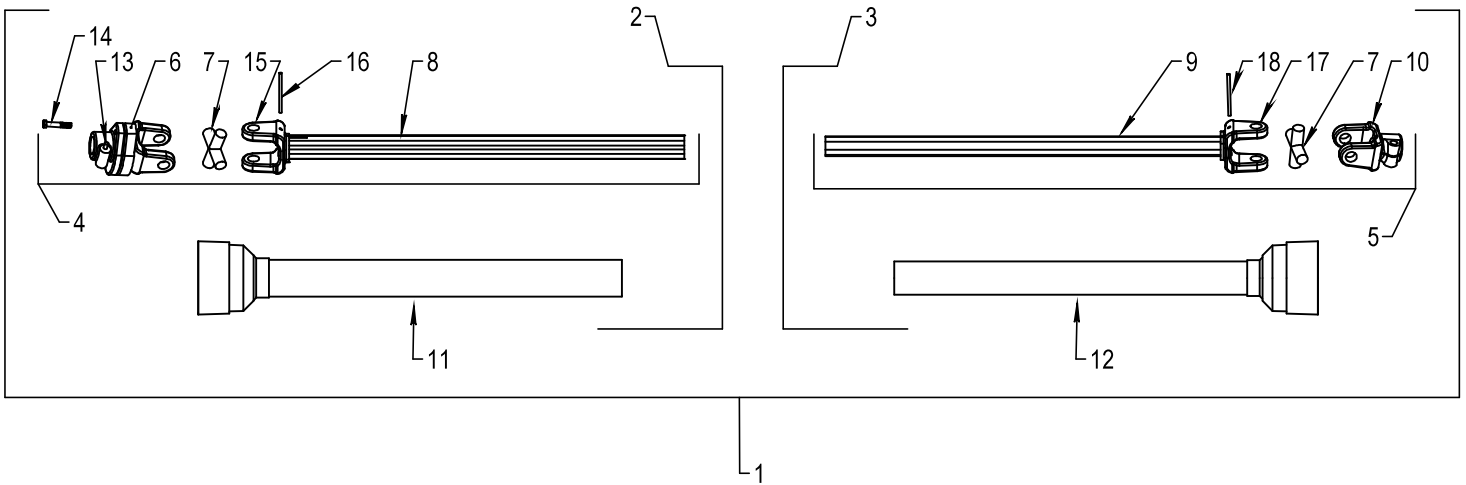
870 - 1020 Decals & Driveshaft



#	Part #	Qty.	Description
1	51477	2	1-3/4" Bearing
2	51476	2	1-3/4" Pillow Block
3	56246	1	Driveshaft
4	56249	1	Driveshaft Sleeve
5	51289	2	U-Joint Yoke
6	50384	1	U-Joint Cross
7	51622	1	U-Joint Assy.
8	51576	1	Jack
9	56052	1	PTO Bearing Box
10	51243	1	Drive Shaft Guard
11	51148	1	Hand Wheel
12	51602	1	Hose Holder

13	51603	2	206" Door Hoses
14	51604	1	266" Auger Hose
15	51605	1	246" Auger Hose
16	51140	1	Outer Door
17	4241	1	6 - Tooth Pinion Gear
18	51138	1	Ladder
19	50252	1	Warning Decal Set
20	51246	1	E-Z Trail Decal
21	51247	1	Model Number
22	51248	1	Handwheel Open Decal
23	51255	1	Stripe
24	51251	1	Open Close Decal
25	51256	1	Grain Cart Decal Set

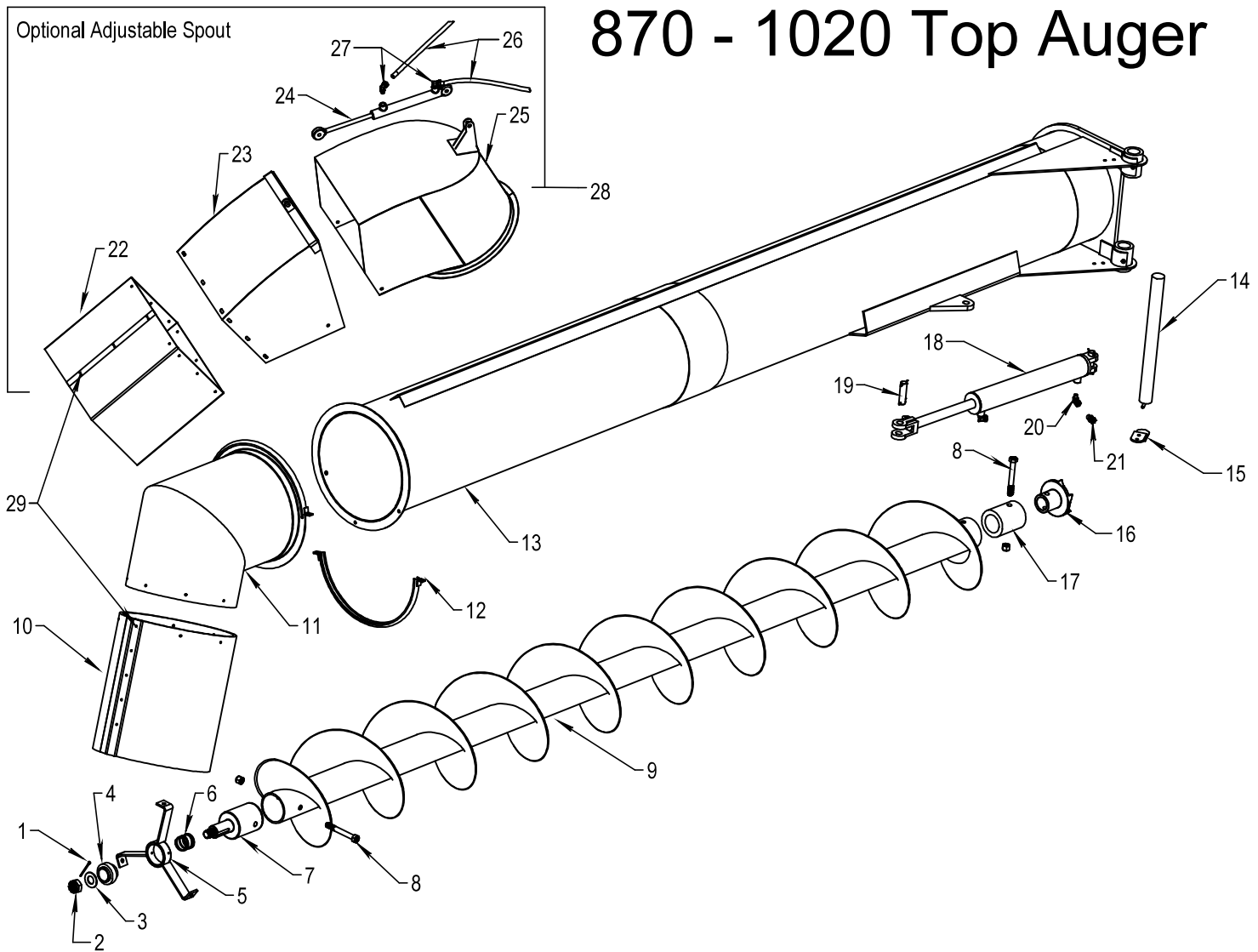
870 - 1020 PTO Shaft Assembly



#	Part #	Qty.	Description
1	51315	1	PTO Shaft Assy.
2	51316	1	Front 1/2 PTO
3	51317	1	Rear 1/2 PTO
4	51365	1	Front Shaft Assy.
5	51366	1	Rear Shaft Assy.
6	51285	1	Tractor Yoke
7	50384	2	Cross Kit
8	51287	1	Front Shaft
9	51288	1	Rear Shaft
10	51289	1	Splined Machine Yoke
11	50318	1	Front Shield Assy.
12	50319	1	Rear Shield Assy.

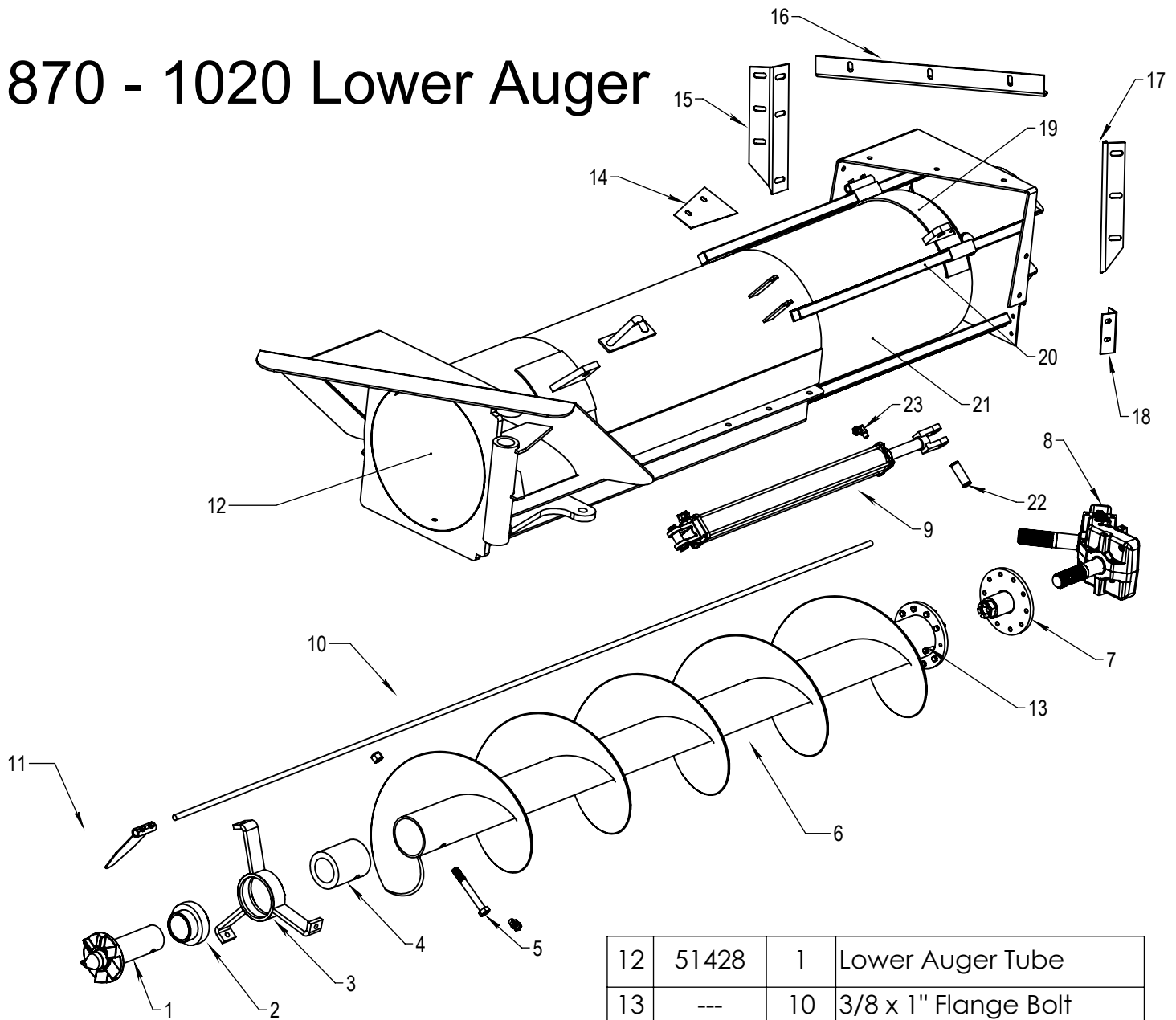
13	51279	1	1-3/4 1000 Spline
14	51280	1	Shear Bolt & Nut
15	51285	1	Front Yoke
16	51286	1	Front Roll Pin
17	51289	1	Rear Yoke
18	51290	1	Rear Roll Pin

870 - 1020 Top Auger



#	Part #	Qty.	Description	15	51460	1	Hinge Pin Stop
1	50458	1	Cotter Pin 3/16" x 3"	16	51027	1	Top Drive Casting
2	50452	1	Castle Nut 1-1/4 x 12"	17	51469	1	Auger Tube Sleeve
3	50541	1	Top Auger Idler Washer	18	51621	1	Hydraulic Cylinder, 3" x 20" Stroke
4	50629	1	2" Bearing	19	51412	4	1" Cylinder Pins
5	51128	1	2" Bearing Hanger	20	50410	4	90° Fitting
6	50135	1	Top Auger Spring	21	51419	1	Restrictor Fitting
7	51141	1	Top Stub Shaft	22	51646	1	Adjustable Rubber Spout
8	51470	2	3/4" - 10 x 6" Auger Bolt	23	51182	1	Adjustable Discharge Spout
9	51164	1	164" Top Auger	24	51183	1	Hydraulic Cylinder, 1" x 8" Stroke
10	50646	1	Auger Rubber Spout	25	51181	1	Adjustable Discharge Head
11	51179	1	Discharge Head	26	51184	2	Adjustable Spout Hoses
12	51180	1	Flange Clamp	27	50410	2	90° Fitting
13	51161	1	Top Auger Tube	28	51190	1	Adjustable Spout Assy.
14	51462	1	Hinge Pin	29	50389	16	1/4" x 1" Step Bolt w/ Flange Nut

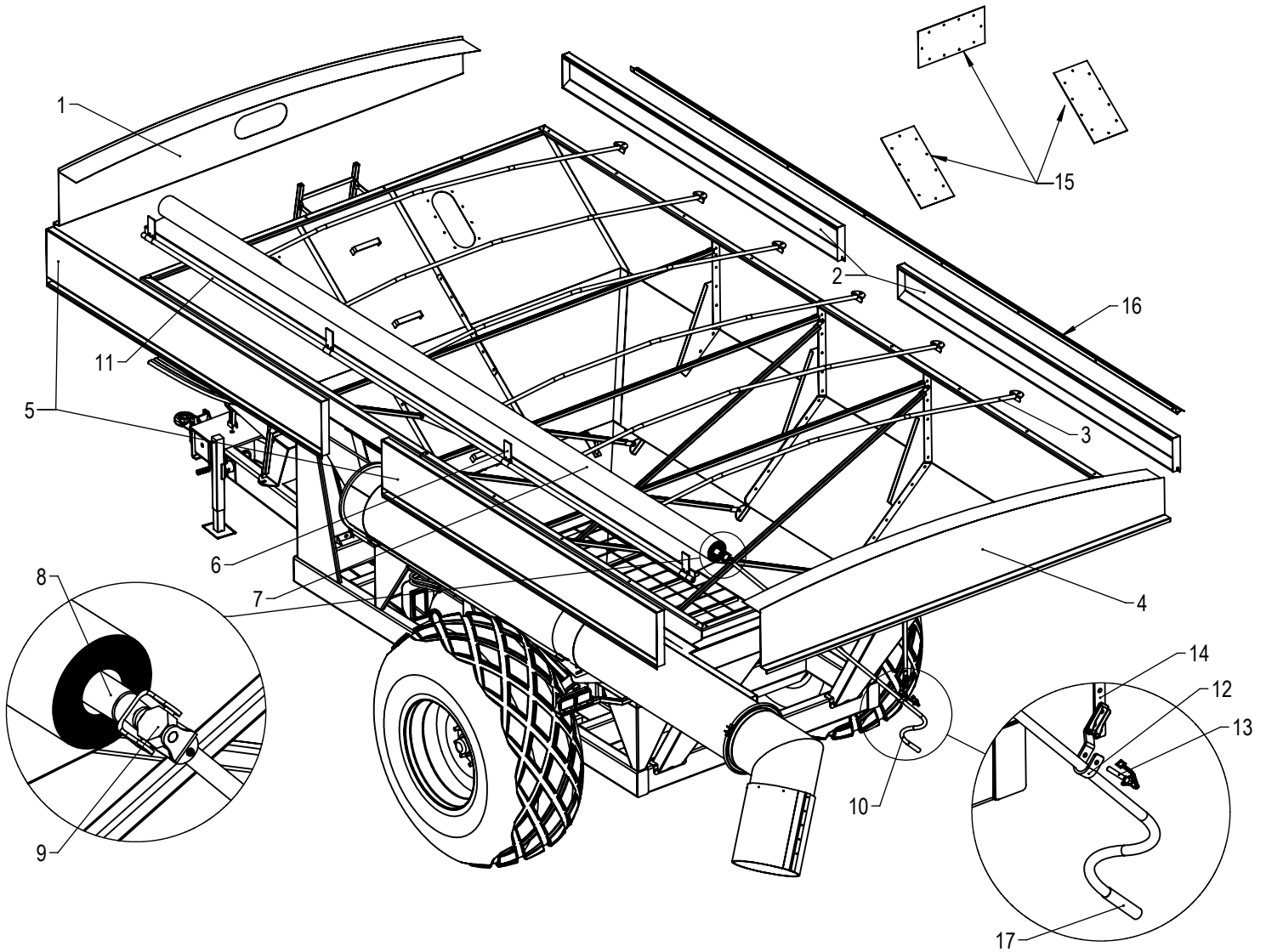
870 - 1020 Lower Auger



#	Part #	Qty.	Description
1	51028	1	Bottom Drive Shaft
2	51629	1	3" Bearing
3	51129	1	3" Bearing Hanger
4	56277	1	Bottom Auger Sleeve
5	51470	1	3/4" - 10 x 6" Auger Bolt
6	51188	1	88" Lower Auger
7	51624	1	Splined Hub
8	51223	1	Superior Gearbox
9	51630	1	2-1/2" x 30" Cylinder - '19 & Earlier
9	51636	1	2-1/2" x 36" Cylinder - '20 & Later
10	51134	1	Indicator Rod
11	51132	1	Indicator Flag

12	51428	1	Lower Auger Tube
13	---	10	3/8 x 1" Flange Bolt
14	56256	1	Lower Auger Fill Bracket
15	56251	1	Front Auger Sump Angle
16	56255	1	Center Auger Sump Angle
17	56253	1	Rear Auger Sump Angle
18	56245	1	Rear Auger Sump Cap
19	51115	1	Cylinder Anchor Assembly
20	51130	2	Slide Rail Set
21	51112	1	Inside Tube Door
22	51412	4	1" Cylinder Pin
23	50410	4	90° Fitting

870 - 1020 Tarp and Extensions



#	Part #	Qty.	Description
1	56092	1	Tarp Extension Front
2	56100	2	Tarp Extension RH
3	51874	6	Tarp Bow
4	56095	1	Tarp Extension Rear
5	56098	2	Tarp Extension LH
6	50850	4	Tarp Stop
7	51872	1	1020 Tarp
7	51870	1	870 Tarp
8	56285	1	1020 Tarp Roll Tube
8	56284	1	870 Tarp Roll Tube
9	4840	1	U-Joint
10	56286	1	Tarp Crank

11	56288	1	1020 Fastening Pipe
11	56287	1	870 Fastening Pipe
12	50849	1	Crank Retainer
13	50851	1	Crank Retaining Pin
14	56298	1	Crank Retaining Bracket
15	51257	3	Window
16	54007	1	1020 Latch Plate
16	54008	1	870 Latch Plate
17	51878	1	Crank Hand Grip