

OPERATORS MANUAL  
&  
PARTS BOOK

# 510 GRAIN CART



1050 E. COLUMBIA  
P.O. BOX 168  
ARTHUR, IL 61911

TOLL FREE: 800-677-2802  
PHONE: 217-543-3471  
WWW.E-ZTRAIL.COM

# WARNING

Do not attempt to clean, adjust, lubricate, or enter the grain cart while any part is in operation.

Do not start the machine without all guards & shields in place & in good working condition.

Do not operate on public roads unless equipped with proper lighting or warning devices. It is the responsibility of the user & owner to install lighting or other equipment as required by state & federal laws.

Do not allow children to play on or around the grain cart.

# OPERATION

The indicator flag on the front of the cart shows the position of the inner door.

When engaging the PTO, the door should be closed & and the tractor should be running at low RPM's to prolong the life of the driveline & gearbox.

With the auger running, open the door to begin unloading grain. Do not exceed 750 PTO RPM for maximum efficiency & auger life.

When the cart is nearly empty, the door can be partially closed to provide better clean out.

Over tightening of the shear bolt on the front PTO yoke creates excessive friction, which drastically increases shear torque and can damage or result in premature failure of the gearbox. Always use a locknut on the shearbolt and leave the nut loose enough that you can turn the bolt with your fingers.

The top auger must remain locked in the unloading position while the PTO is engaged. Folding the top auger while the auger is turning can cause damage to the augers.

The top auger is equipped with an over-center lock to hold the auger in unloading position. If the auger will not fold down, the lock may be going too far over center. To correct this, a shim can be placed between the square bar & the stop pin on the linkage bars.

# MAINTENANCE

Grease regularly:

- PTO Shaft
- U-joint at Gearbox
- Bearing at Top of Lower Auger
- Bearing at Top of Top Auger
- Auger Hinge
- Auger Over-Center Lock
- Swivel Hitch

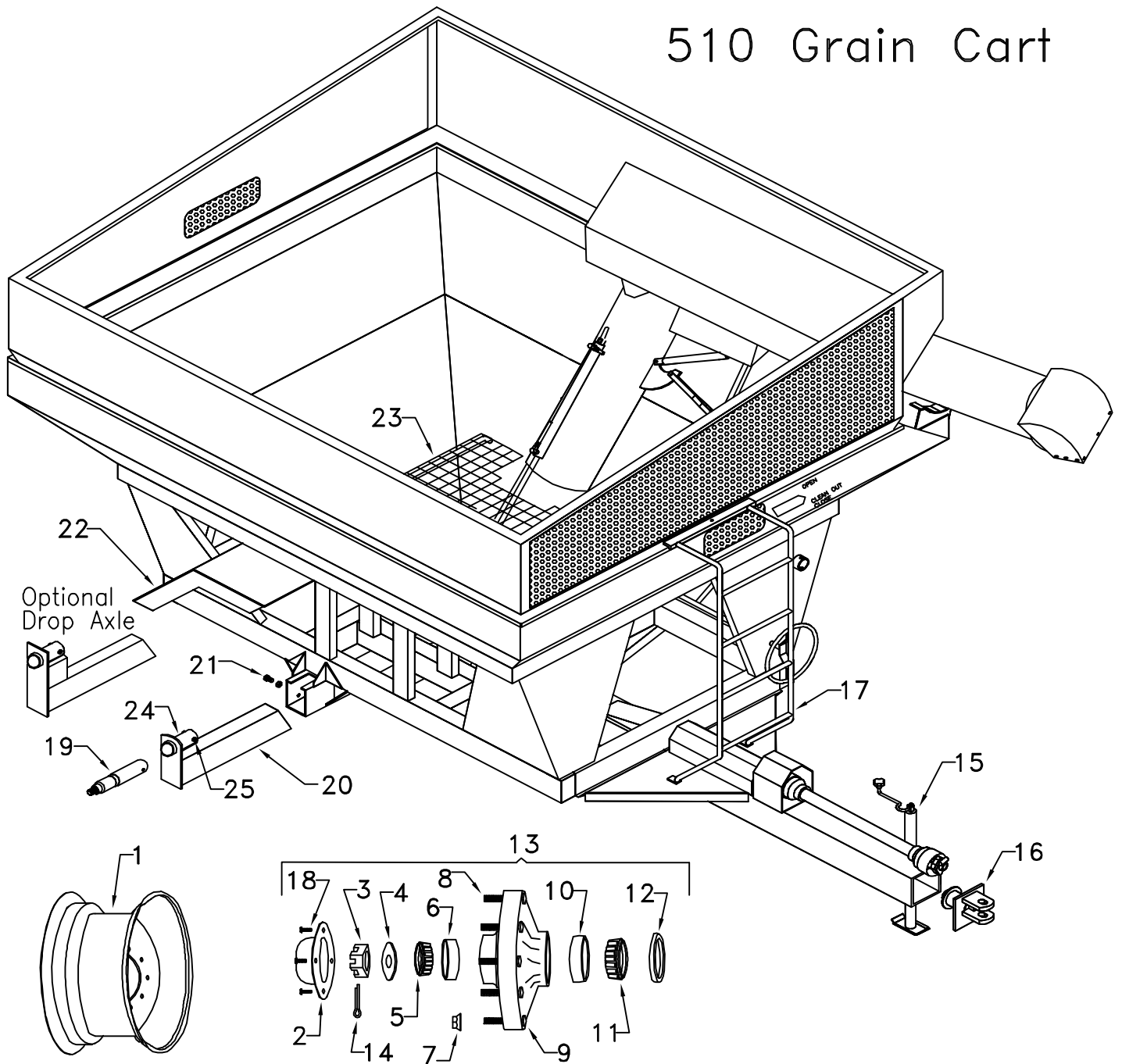
Approximate Tire Inflations:

- 18.4 x 26 ... 35 PSI
- 23.1 x 26 ... 33 PSI
- 24.5 x 32 ... 30 PSI
- 30.5 x 32 ... 30 PSI.

Before first use, then annually:

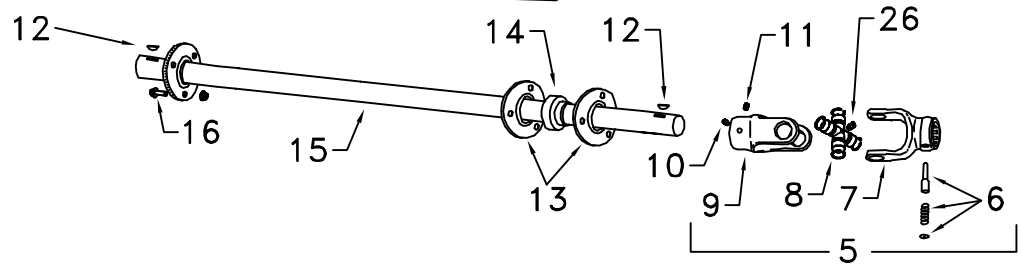
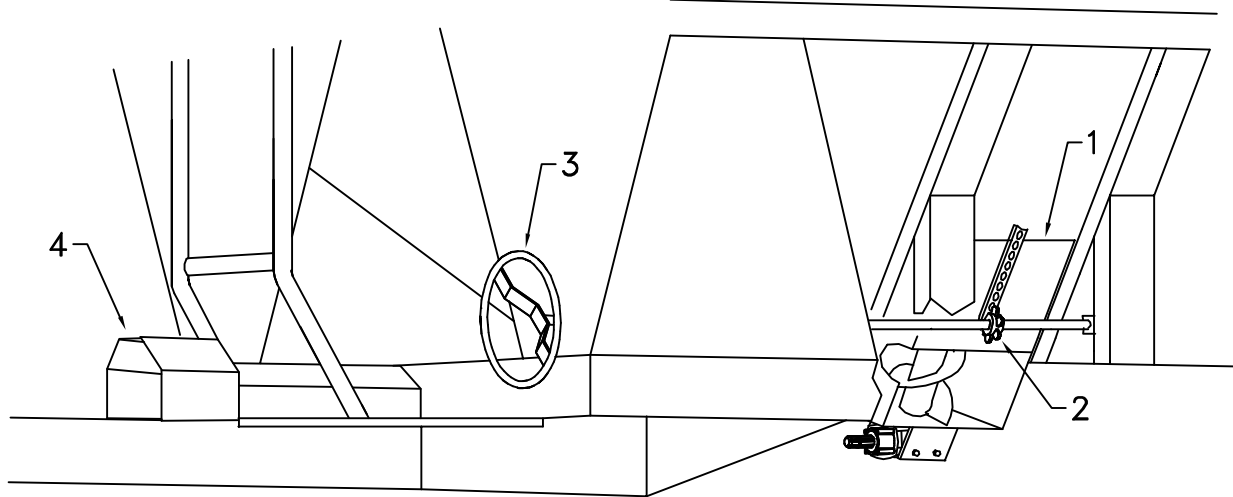
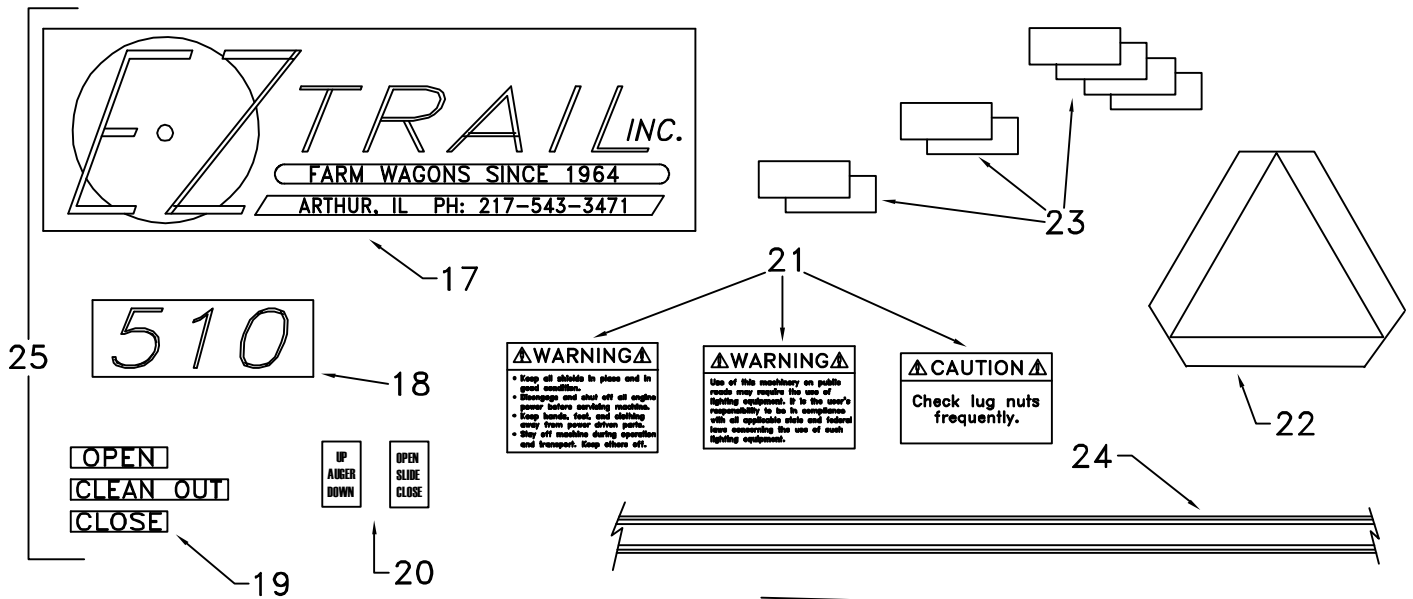
- Check gearbox oil level, use 90W oil.
- Check wheel bearings for sufficient grease & proper adjustment.

# 510 Grain Cart



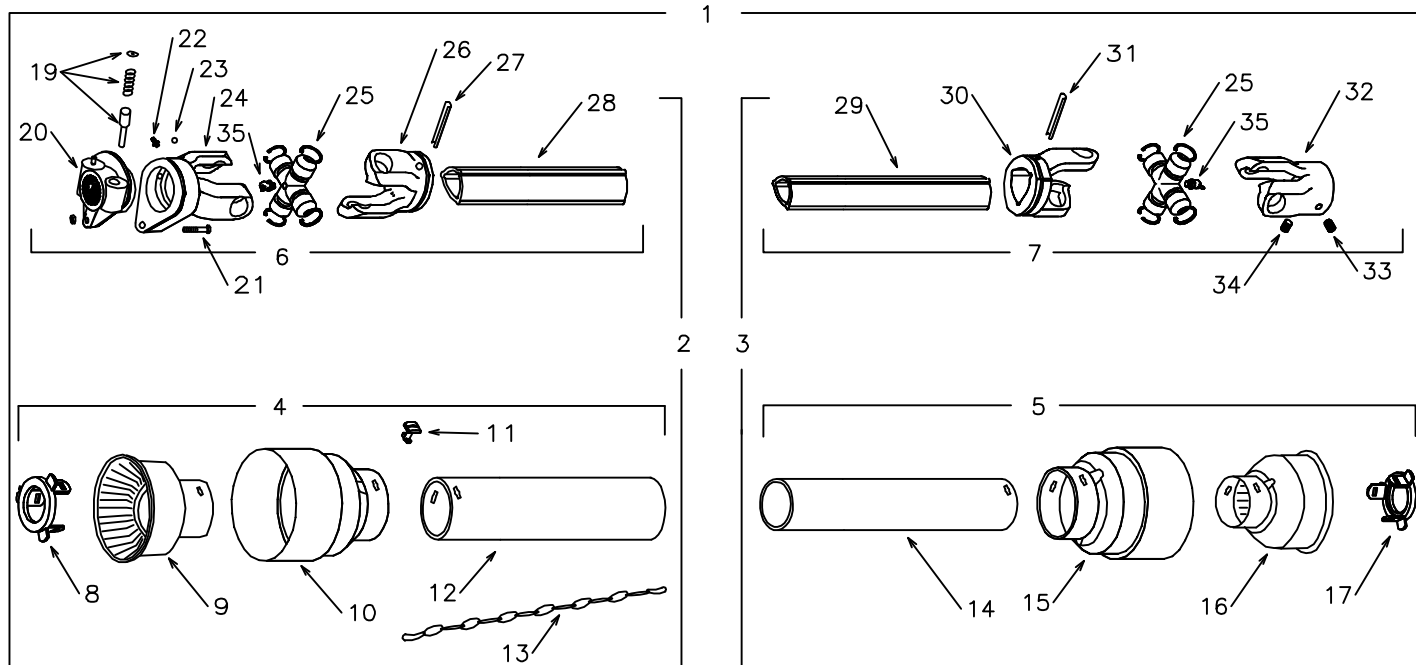
#	Part#	Qty.	Description
1	50416	2	Wheel 26x16-18.4
1	50420	2	Wheel 26x20-23.1
1	50418	2	Wheel 38x18-20.8
1	50417	2	Wheel 42x16-18.4
2	50455	2	Hub Cap
3	50452	2	Slotted Nut
4	50451	2	Washer
5	50460	2	Outer Bearing
6	50453	2	Outer Race
7	50655	20	Wheel Nut
8	50542	20	Wheel Stud
9	50549	2	Hub
10	50540	2	Inner Race
11	50545	2	Inner Bearing
12	50541	2	Grease Seal
13	50548	2	Hub Assembly
14	50458	1	Cotter Pin
15	50576	1	Jack Assembly
16	50509	1	Swivel Hitch Assembly
17	50441	1	Ladder
18	50459	8	5/16 x 1/2 Bolt
19	50551	2	Spindle, Bolt-In
20	50566	2	Axle w/Sleeve
	50568	2	Drop Axle w/ Sleeve
21	50386	6	3/4 x 2 Bolt w/Jam Nut
22	50142	1	RH Fender
22	50143	1	LH Fender
23	50177	1	Safety Grate Assembly
24	50560	2	Spindle Sleeve
25	50552	1	5/8 X 4-1/2 Bolt & Locknut

# 510 Decals & Driveshaft



#	Part#	Qty.	Description
1	50140	1	Outer Door
2	4241	1	6 Tooth Pinion Gear
3	50147	1	Handwheel & Shaft
4	50243	1	"Doghouse" PTO Guard
5	50622	1	U-Joint Assy.
6	50278	1	Push Pin Set
7	50298	1	Gearbox Yoke W/Pin
8	50284	1	Cross Kit
9	50291	1	Machine Yoke
10	50292	1	Set Screw 3/8 x 3/8
11	50293	1	Set Screw 3/8 x 1/2
12	50294	2	Half Moon Key 5/16x1.25
13	50476	4	3 Hole Flange
14	50477	2	1-1/4 Bearing W/Collar
15	50686	1	86" Drive Shaft
16	50245	6	3/8 x 3/4 Bolt W/Nut
17	50245	2	E-Z Trail Decal
18	50247	2	Model # Decal
19	50250	1	Indicator Decal Set
20	50251	1	Hose Decal Set
21	50252	1	Warning Decal Set
22	50253	1	SMV Decal
23	50154	1	Reflector Set
24	50255	1	47 Ft. Stripe
25	50256	1	Grain Cart Decal Set
26	50295	1	Grease Zerk

# PTO Parts for all Grain Carts



#	Part#	Qty.	Description
1	50615	1	1000 RPM, 1-3/8 PTO Assy.
2	50616	1	Front 1/2 PTO
3	50617	1	Rear 1/2 PTO
4	50618	1	Front Shield Assy.
5	50619	1	Rear Shield Assy.
6	50265	1	Front Shaft Assy.
7	50266	1	Rear Shaft Assy.
8	50267	1	Front Shield Retaining Collar
9	50268	1	Front Shield Inner Bell
10	50269	1	Front Shield Outer Bell
11	50270	6	Shield Retaining Clips
12	50271	1	Front Shield Tube
13	50272	2	Safety Chains
14	50273	1	Rear Shield Tube
15	50274	1	Rear Shield Outer Bell
16	50275	1	Rear Shield Inner Bell
17	50276	1	Rear Shield Retaining Collar

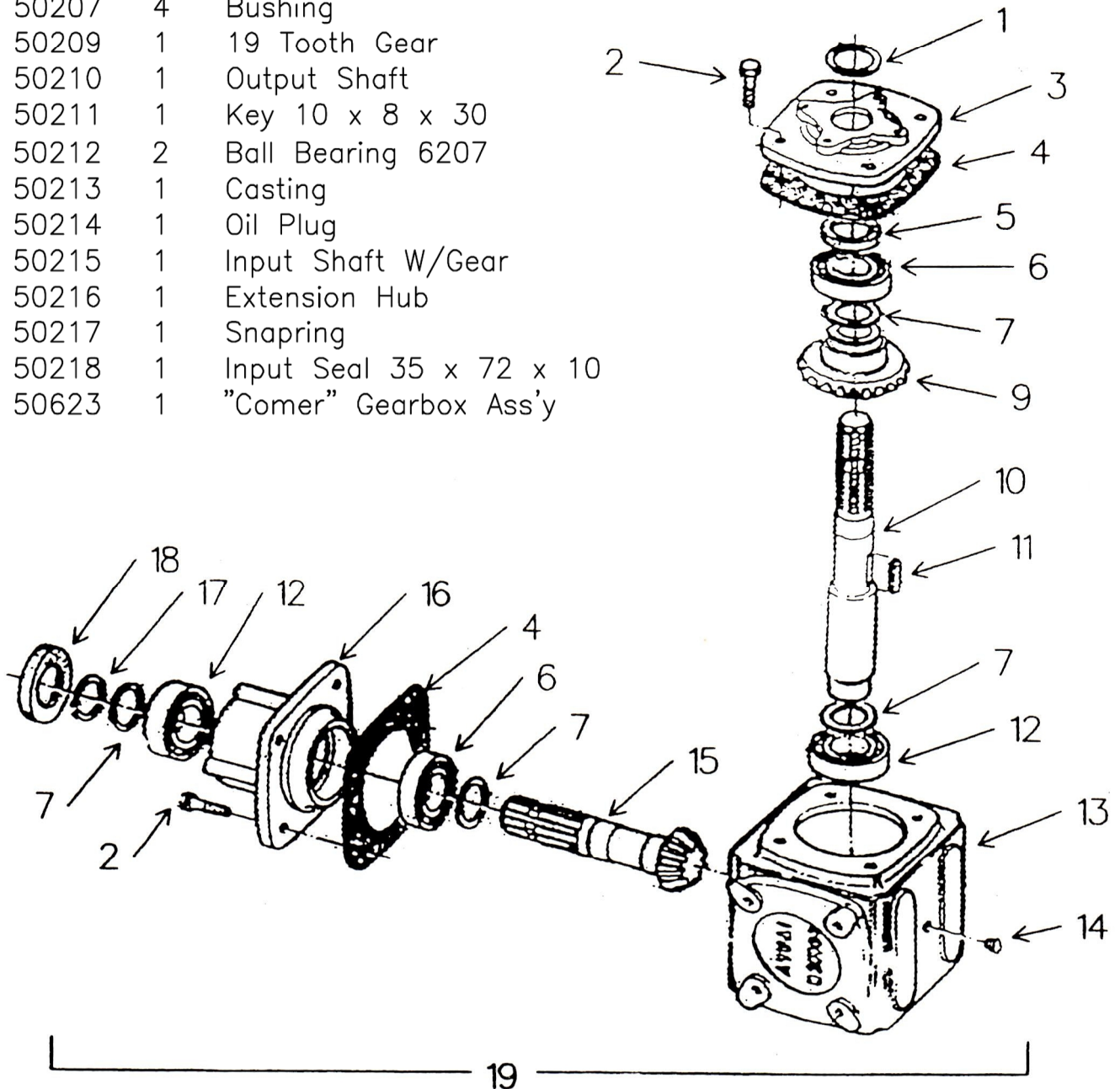
#	Part#	Qty.	Description
19	50278	2	Push Pin Set
20	50279	1	Front Spline, W/Pins
21	50280	1	Shear Bolt w/locknut
22	50281	1	Grease Zerk
23	50282	1	Set of Balls (24)
24	50283	1	Tractor Yoke
25	50284	2	Cross Kit
26	50285	1	Front Yoke
27	50286	1	Roll Pin
28	50287	1	Front Shaft
29	50288	1	Rear Shaft
30	50289	1	Rear Yoke
31	50290	1	Roll Pin
32	50291	1	Machine Yoke
33	50292	1	Set Screw 3/8 x 3/8
34	50293	1	Set Screw 3/8 x 1/2
35	50295	2	Grease Zerk, 45°, 8mm

## Optional 1000 RPM, 1-3/4 PTO:

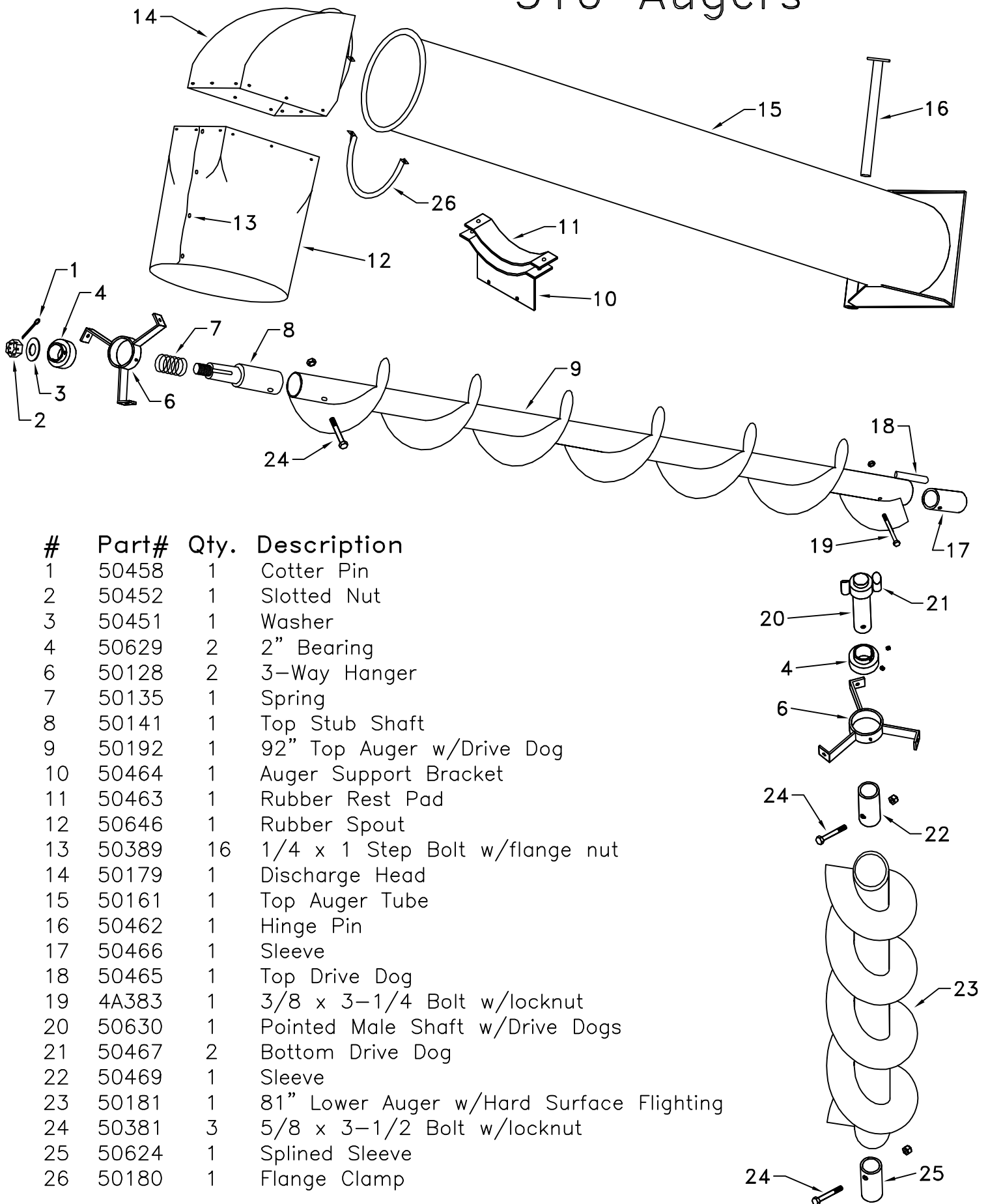
1	50315	1	1000 RPM, 1-3/4 PTO Assy.
2	50316	1	Front 1/2 PTO
3	50317	1	Rear 1/2 PTO
4	50318	1	Front Shield Assy.
5	50319	1	Rear Shield Assy.
6	50365	1	Front Shaft Assy.
7	50366	1	Rear Shaft Assy.
25	50384	2	Cross Kit

# Comer Gearbox

#	Part#	Qty.	Description
1	50201	1	External Seal
2	50202	8	Cap Screw M 12 x 25
3	50203	1	Cover
4	50204	2	Gasket
5	50205	1	Output Seal 35 x 52 x 7
6	50206	2	Roller Bearing & Race 30207
7	50207	4	Bushing
9	50209	1	19 Tooth Gear
10	50210	1	Output Shaft
11	50211	1	Key 10 x 8 x 30
12	50212	2	Ball Bearing 6207
13	50213	1	Casting
14	50214	1	Oil Plug
15	50215	1	Input Shaft W/Gear
16	50216	1	Extension Hub
17	50217	1	Snapping
18	50218	1	Input Seal 35 x 72 x 10
19	50623	1	"Comer" Gearbox Ass'y

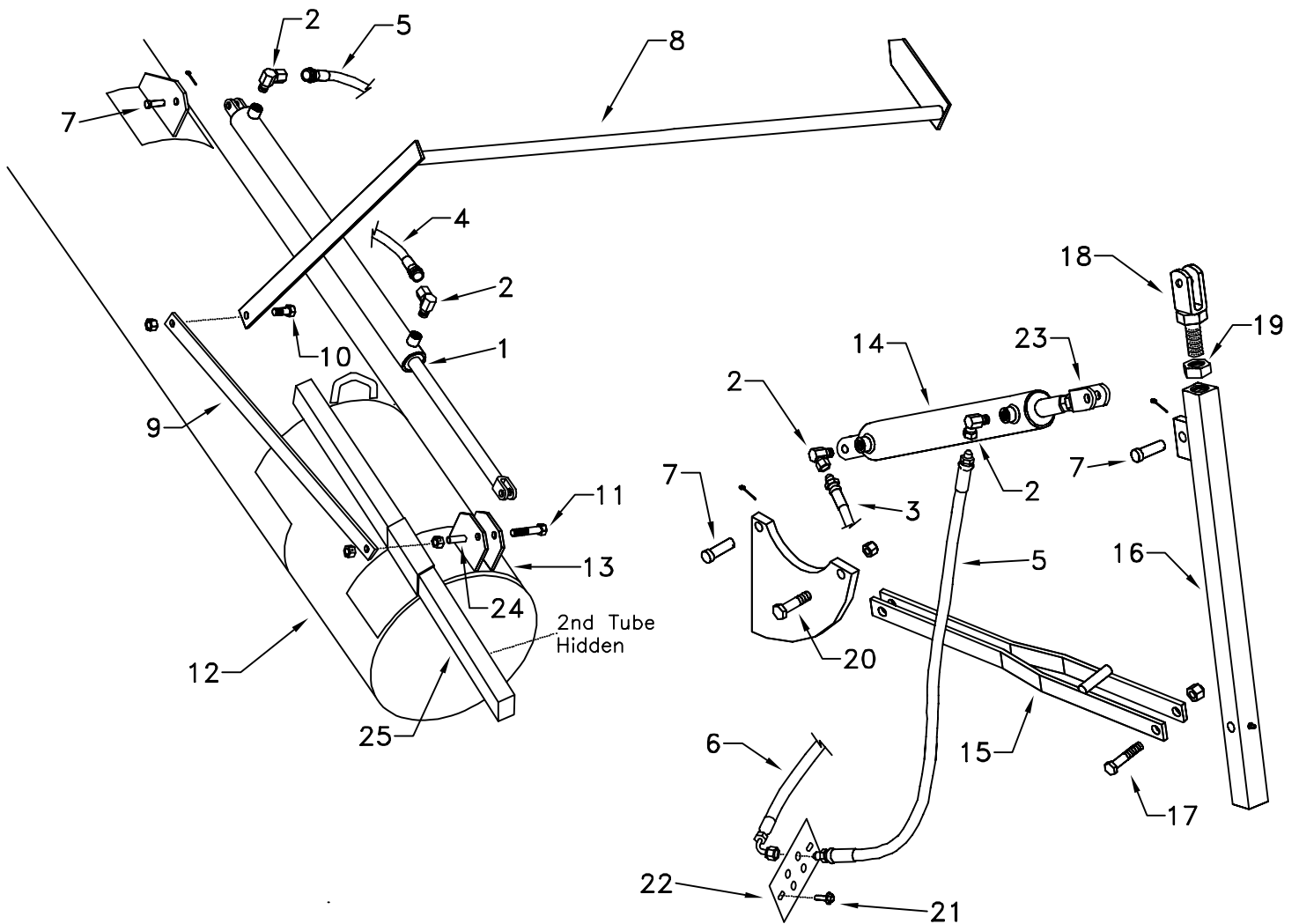


# 510 Augers



#	Part#	Qty.	Description
1	50458	1	Cotter Pin
2	50452	1	Slotted Nut
3	50451	1	Washer
4	50629	2	2" Bearing
6	50128	2	3-Way Hanger
7	50135	1	Spring
8	50141	1	Top Stub Shaft
9	50192	1	92" Top Auger w/Drive Dog
10	50464	1	Auger Support Bracket
11	50463	1	Rubber Rest Pad
12	50646	1	Rubber Spout
13	50389	16	1/4 x 1 Step Bolt w/flange nut
14	50179	1	Discharge Head
15	50161	1	Top Auger Tube
16	50462	1	Hinge Pin
17	50466	1	Sleeve
18	50465	1	Top Drive Dog
19	4A383	1	3/8 x 3-1/4 Bolt w/locknut
20	50630	1	Pointed Male Shaft w/Drive Dogs
21	50467	2	Bottom Drive Dog
22	50469	1	Sleeve
23	50181	1	81" Lower Auger w/Hard Surface Flighting
24	50381	3	5/8 x 3-1/2 Bolt w/locknut
25	50624	1	Splined Sleeve
26	50180	1	Flange Clamp

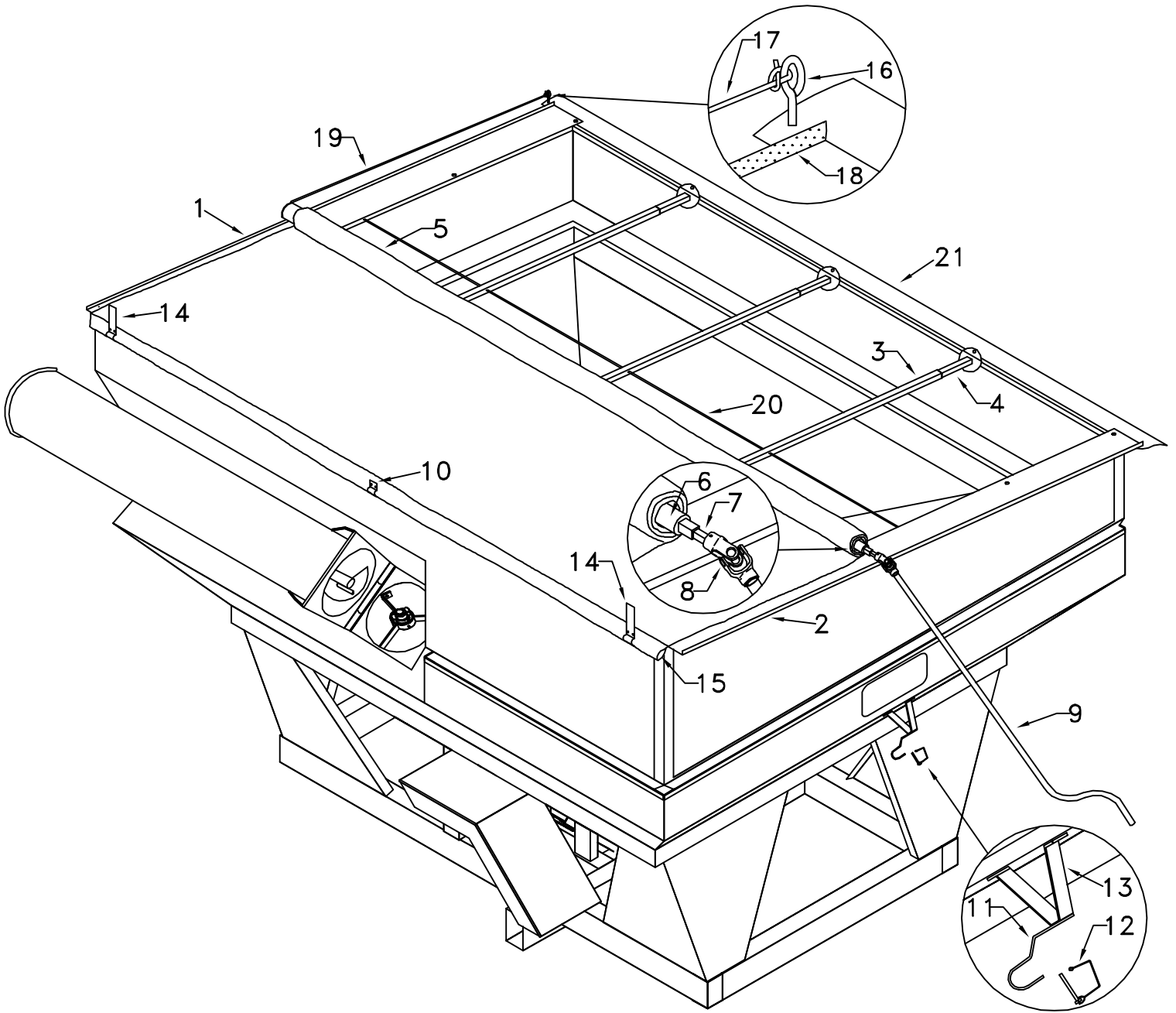
# 510 Cylinders & Hoses



#	Part#	Qty.	Description
1	50127	1	2-1/2" x 27" Cylinder
	50113	1	2-1/2" Cylinder Seal Kit
2	50410	4	90 Deg. Fitting
3	50103	1	20" Hydraulic Line
4	50402	1	40" Hydraulic Line
5	50401	2	32" Hydraulic Line
6	50406	4	84" Hyd. Line, 90 Deg. Ends
	50604	4	112" Hyd. Line to Tractor
7	50412	4	Clevis Pin W/Cotter Pin
8	50131	1	Indicator Assembly
9	50133	1	Indicator Linkage Arm
10		1	1/2 x 1 Bolt W/Lock Nut
11		1	1/2 x 4.5 Bolt w/Lock Nut
12	50114	1	Sliding Tube Door
13	50115	1	Cylinder Anchor Bracket Ass'y.
14	50612	1	2" x 12" Cylinder (Incl. #23)
	50613	1	2" Cylinder Seal Kit
15	50606	1	Auger Lock Linkage Bars
16	50608	1	Auger Lock Square Bar
17		1	1/2 x 3 Bolt w/Lock Nut
18	50607	1	7/8" Clevis Bolt
19	50601	1	7/8" Jam Nut
20		1	1/2 x 2.25 Bolt w/Lock Nut
21		4	3/8 x 3/4 Flange Bolt
22	50411	2	Hose Plate
23	50673	1	5/8" Clevis Bolt
24	50116	1	Spacer
25	50130	1	Slide Rail Set



# 510 Roll Tarp



#	Part#	Qty.	Description	11	50849	1	Crank Retainer
1	50865	1	Front Latch Plate	12	50851	1	Crank Retaining Pin
2	50875	1	Rear Shelf Plate	13	50848	1	Crank Retaining Bracket
3	50856	3	Long Cross Tube	14	50850	2	Straight Tarp Stop
4	50855	3	Short Cross Tube	15	50864	1	Fastening Pipe
5	50844	1	Tarp	16	4868	1	Eyebolt
6	50835	1	Roll Tube	17	4859	1	Bungee Cord
7	4839	1	Square Drive Tube	18	4860	1	Edge Trim
8	4840	1	U-Joint	19	4858	1	Roll Plug
9	4845	1	Crank	20	50882	1	Center Rod
10	4851	1	Tarp Clamp	21	50841	1	Latch Plate