

OPERATORS MANUAL
&
PARTS BOOK

230 & 3400

Gravity Wagons & Accessories



1050 E. COLUMBIA
P.O. BOX 168
ARTHUR, IL 61911

TOLL FREE: 800-677-2802
PHONE: 217-543-3471
WWW.E-ZTRAIL.COM

WARNINGS, INSTRUCTIONS & MAINTENANCE

Keep hands, feet, hair and clothing away from moving parts while unit is in operation. Stay away from intake during operation.

Never allow anyone in, near or on the gravity box during transporting or unloading grain. Moving grain is dangerous and can cause entrapment, resulting in severe injury or death by suffocation.

Do not operate on public roads unless equipped with proper lighting or warning devices. It is the responsibility of the user & owner to install lighting or other equipment as required by state & federal laws.

Make sure that the gravity box is properly fastened to the running gear.

Do not use side extensions with the 230 gravity box. Only with a 13 ton gear can 14" extensions be added to the 3400 gravity wagon to increase the capacity to 400 bushels.

Connect hydraulic power to the 3/8 Pipe Thread valve ports. Reverse connections if necessary for correct rotation of auger. CAUTION: Never try to unplug the auger when under power!

Seed damage will be minimized by keeping the auger full of grain & not running it too fast.

All sizes of tires should be inflated to approx. 55 PSI.

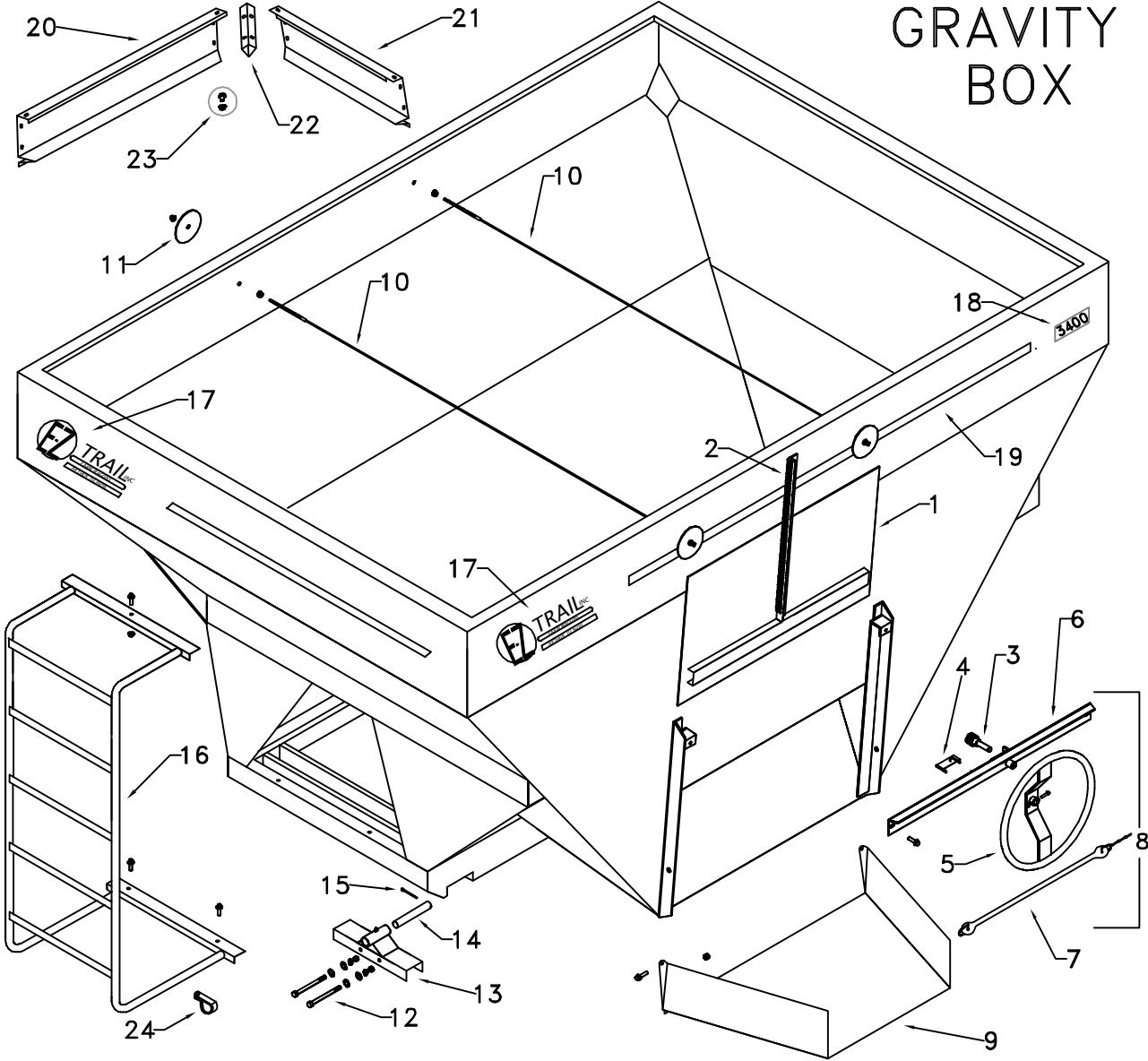
Before first use, then annually, check wheel bearings for sufficient grease & proper adjustment.

Regularly grease front spindles, tie rod ends, tongue bolt, steering frame, hand wheel, & pivot shaft.

Check wheel nuts for proper torque before first use, after first load, and then periodically. (100 ft/lbs on 872W, 150 ft/lbs on 1074 & 1384B)

Parts may be ordered online at www.e-ztrail.com, where you may also download additional manuals.

GRAVITY BOX



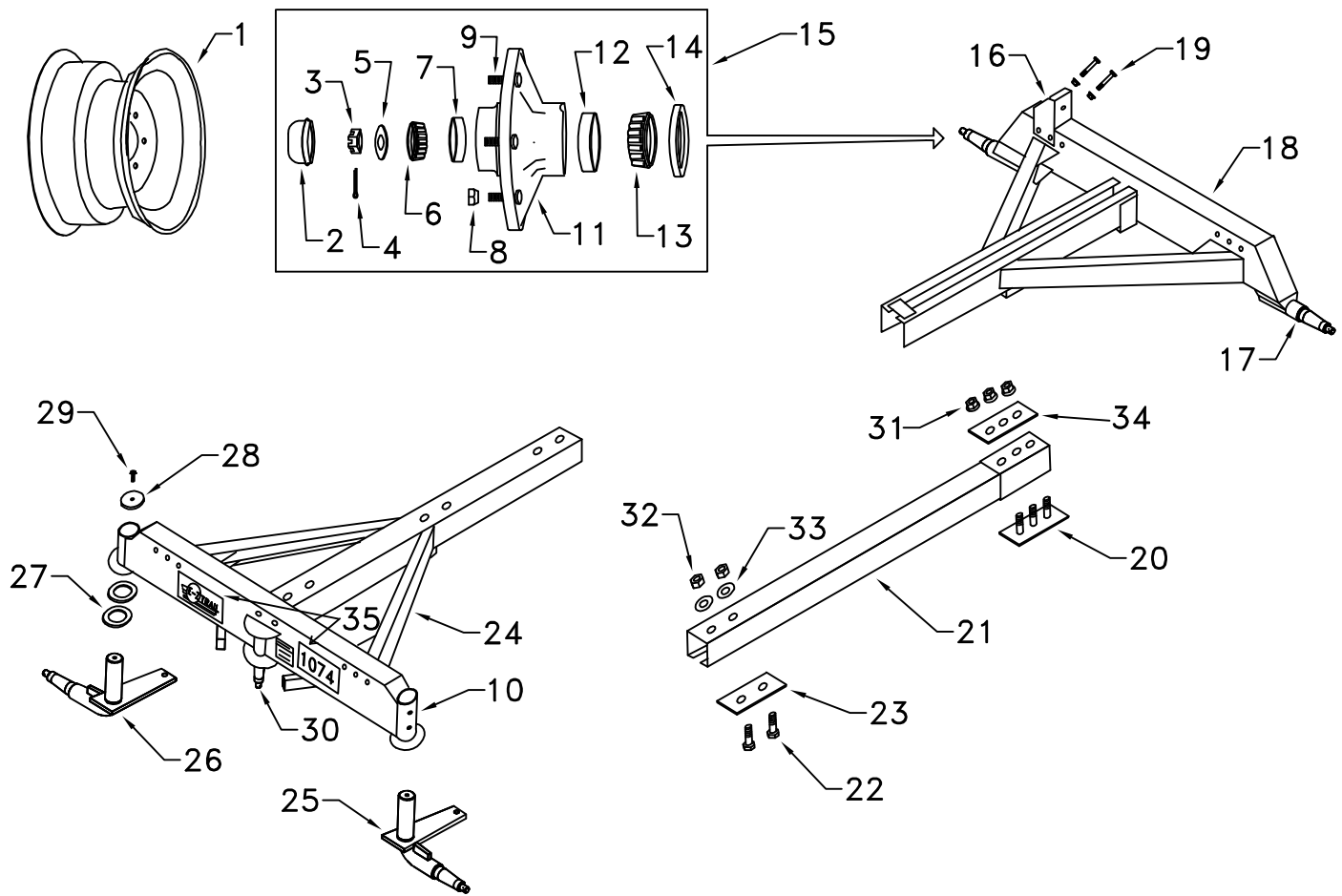
Model #: 230 3400

| # | Description | Part # | |
|----|-------------------------------|--------|------|
| 1 | Door w/Rack | 4536 | 4536 |
| 2 | Machined Pinion Rack | 4537 | 4537 |
| 3 | 12T Gear 15/16" Shaft (N.S.) | 4551 | 4551 |
| 3 | 13T Gear 5/8" Shaft ('00-'20) | 4541 | 4541 |
| 4 | Door Rack Flipper Latch | 4555 | 4555 |
| 5 | Handwheel for 12T Gear | 4552 | 4552 |
| 5 | Handwheel for 13T Gear | 4546 | 4546 |
| 6 | 38" Crossbar for 12T Gear | 4553 | 4553 |
| 6 | 38" Crossbar for 13T Gear | 4548 | 4548 |
| 7 | Rubber Strap | 4249 | 4249 |
| 8 | Handwheel Assembly | 4550 | 4550 |
| 9 | Chute | 4325 | 4325 |
| 10 | Cross Cable Assembly | | 4334 |
| 11 | 4" Washer | | 4327 |

Model #: 230 3400

| # | Description | Part # | |
|---|--------------------------|--------|-------|
| 12 | 1/2" X 5-1/2" Bolt | | |
| 13 | 4" Pivot | | 4331 |
| 14 | Pivot Shaft | | 4332 |
| 15 | Cotter Pin | | 4333 |
| 16 | Ladder | 4212 | 4311 |
| 17 | E-Z Trail Decal | 4305 | 4305 |
| 18 | Model # Decal | 4201 | 4301 |
| 19 | Striping | 50255 | 50255 |
| <i>Opt. Extension for 3400, only with 13 Ton Gear</i> | | | |
| 20 | 14" X 12'6" Ext'n Side | | 4358 |
| 21 | 14" X 8'6" Ext'n End | | 4357 |
| 22 | 14" Corner Angle | | 4359 |
| 23 | Bag of Bolts - 3/8 X 3/4 | | 4255 |
| 24 | AugerMate Mounting Clamp | 4578 | 4578 |

872W, 1074, & 1384B GEARS



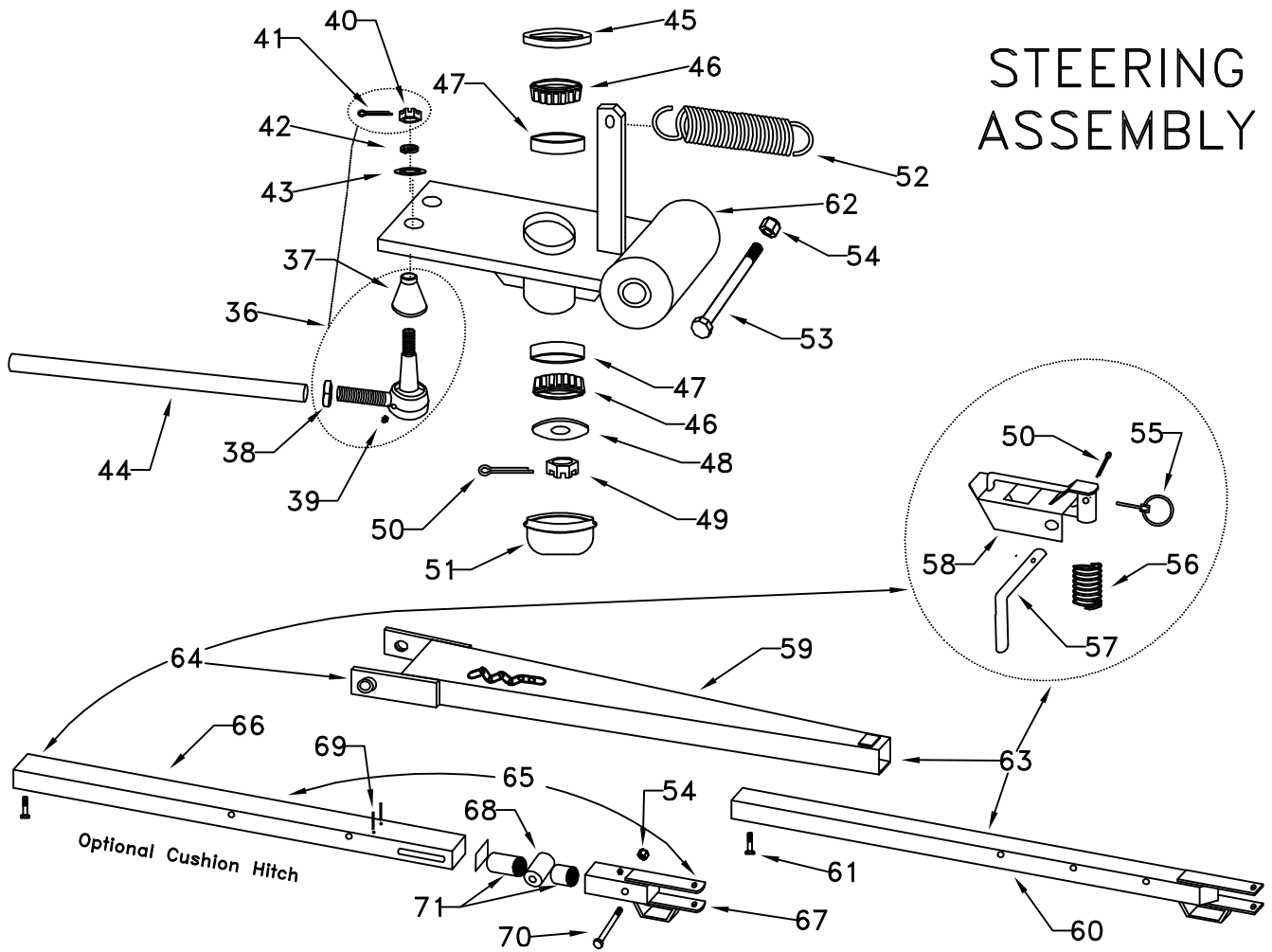
Model #: **872W** **1074** **1384B**

| # | Description | Part # | | |
|----|----------------------|--------|------|------|
| 1 | Standard Wheel | 1095 | 1096 | 1353 |
| 1 | Opt. 22.5X8.25 Wheel | 1356 | 1356 | 1355 |
| 2 | Hub Cap | 1044 | 1044 | 1098 |
| 3 | 3/4-16 Slotted Nut | 1087 | 1087 | 1551 |
| 4 | Cotter Pin | 1045 | 1045 | 1545 |
| 5 | Spindle Washer | 1086 | 1086 | 1550 |
| 6 | Outer Bearing | 1085 | 1085 | 1082 |
| 7 | Outer Race | 1084 | 1084 | 1083 |
| 8 | Wheel Nut | 865 | 1065 | 1065 |
| 9 | Wheel Stud | 864 | 1064 | 1064 |
| 10 | Grease Zerk | 1093 | 1093 | 1093 |
| 11 | Hub w/Races | 835 | 1032 | 1342 |
| 12 | Inner Race | 834 | 1031 | 1384 |
| 13 | Inner Bearing | 833 | 1030 | 1385 |
| 14 | Grease Seal | 1081 | 1029 | 1391 |
| 15 | Hub Assembly | 874 | 1034 | 1344 |
| 16 | Stake Pocket | 1070 | 1070 | 1070 |
| 17 | Rear Spindle | 823 | 1025 | 1328 |

Model #: **872W** **1074** **1384B**

| # | Description | Part # | | |
|----|-------------------------|--------|------|------|
| 18 | Rear Axle w/Spindles | 821 | 1002 | 1304 |
| 19 | 3/8 X 5 Bolt & Nut | 1071 | 1071 | 1071 |
| 20 | E-Z Clamp | 1004 | 1004 | 1004 |
| 21 | Square Reach | 1039 | 1039 | 1039 |
| 22 | 3/4 X 1-3/4 Bolt | 1006 | 1006 | 1006 |
| 23 | Spacer Plate | 1005 | 1005 | 1005 |
| 24 | Front Axle | 820 | 1001 | 1301 |
| 25 | Left Front Spindle | 811 | 1019 | 1311 |
| 26 | Right Front Spindle | 810 | 1018 | 1310 |
| 27 | Machinery Bushing | 815 | 1022 | 1322 |
| 28 | Bent Spindle Cap | 816 | 1023 | 1323 |
| 29 | 3/8 X 1 Bolt | 1091 | 1091 | 1091 |
| 30 | Steering Spindle Ass'y. | 1079 | 1079 | 1079 |
| 31 | 3/4-16 Flange Nut | 1007 | 1007 | 1007 |
| 32 | 3/4-10 Lock Nut | 1012 | 1012 | 1012 |
| 33 | 3/4 Flat Washer | 1015 | 1015 | 1015 |
| 34 | Upper Clamp Plate | 1024 | 1024 | 1024 |
| 35 | Decal Set | 878 | 1078 | 1378 |

STEERING ASSEMBLY



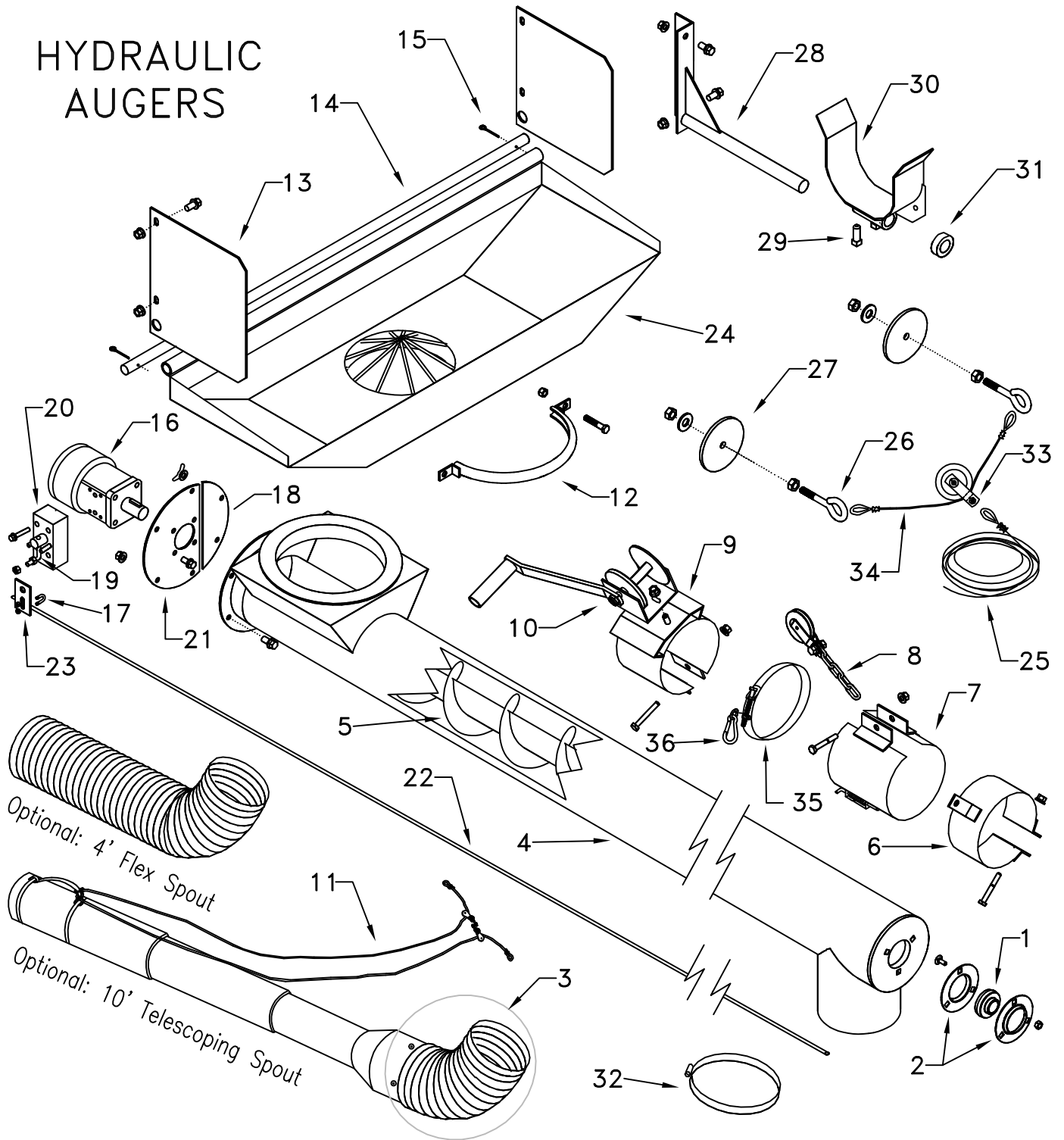
Model #: **872W** **1074** **1384B**

| # | Description | Part # | | |
|----|----------------------|--------|------|------|
| 36 | Tie Rod End Assembly | 1092 | 1092 | 1592 |
| 37 | Rubber Cover | 1043 | 1043 | 1543 |
| 38 | Jam Nut | 1088 | 1088 | 1588 |
| 39 | Grease Zerk | 1093 | 1093 | 1093 |
| 40 | Slotted Nut | 1042 | 1042 | 641 |
| 41 | Cotter Pin | 1046 | 1046 | 1046 |
| 42 | 5/8 Lock Washer | 1048 | 1048 | 1048 |
| 43 | 5/8 Flat Washer | 640 | 640 | 640 |
| 44 | Tie Rod | 1027 | 1027 | 1327 |
| 45 | Seal | 1081 | 1081 | 1081 |
| 46 | Steering Frame Brng. | 1082 | 1082 | 1082 |
| 47 | Steering Frame Race | 1083 | 1083 | 1083 |
| 48 | Washer | 1089 | 1089 | 1089 |
| 49 | 3/4-16 Slotted Nut | 1087 | 1087 | 1087 |
| 50 | Cotter Pin | 1045 | 1045 | 1045 |
| 51 | Steering Frame Cap | 1098 | 1098 | 1098 |
| 52 | Spring | 1013 | 1013 | 1013 |
| 53 | Tongue Bolt | 1014 | 1014 | 1014 |

Model #: **872W** **1074** **1384B**

| # | Description | Part # | | |
|----|-------------------------|--------|------|------|
| 54 | 7/8-9 Lock Nut | 1020 | 1020 | 1020 |
| 55 | Lock Pin | 1017 | 1017 | 1017 |
| 56 | Spring | 1010 | 1010 | 1010 |
| 57 | Latch Pin | 1011 | 1011 | 1011 |
| 58 | Latch | 1016 | 1016 | 1016 |
| 59 | Tongue Outer | 1061 | 1061 | 1061 |
| 60 | Tongue Inner | 1062 | 1062 | 1062 |
| 61 | 3/4-10 X 1 Bolt | 1562 | 1562 | 1562 |
| 62 | Steer. Frame w/Races | 1080 | 1080 | 1380 |
| 63 | E-Z Hitch Assembly | 1063 | 1063 | 1063 |
| 64 | Cushion E-Z Hitch Assy. | 1363 | 1363 | 1363 |
| 65 | Cushion Inner Assy. | 1362 | 1362 | 1362 |
| 66 | Cushion Inner Tube | 1365 | 1365 | 1365 |
| 67 | Cushion Clevis Hitch | 1364 | 1364 | 1364 |
| 68 | Round Bushing | 1367 | 1367 | 1367 |
| 69 | Dowel Pins | 1366 | 1366 | 1366 |
| 70 | 7/8" X 4-3/4" Bolt | 1368 | 1368 | 1368 |
| 71 | Urethane Cushions | 1361 | 1361 | 1361 |

HYDRAULIC AUGERS

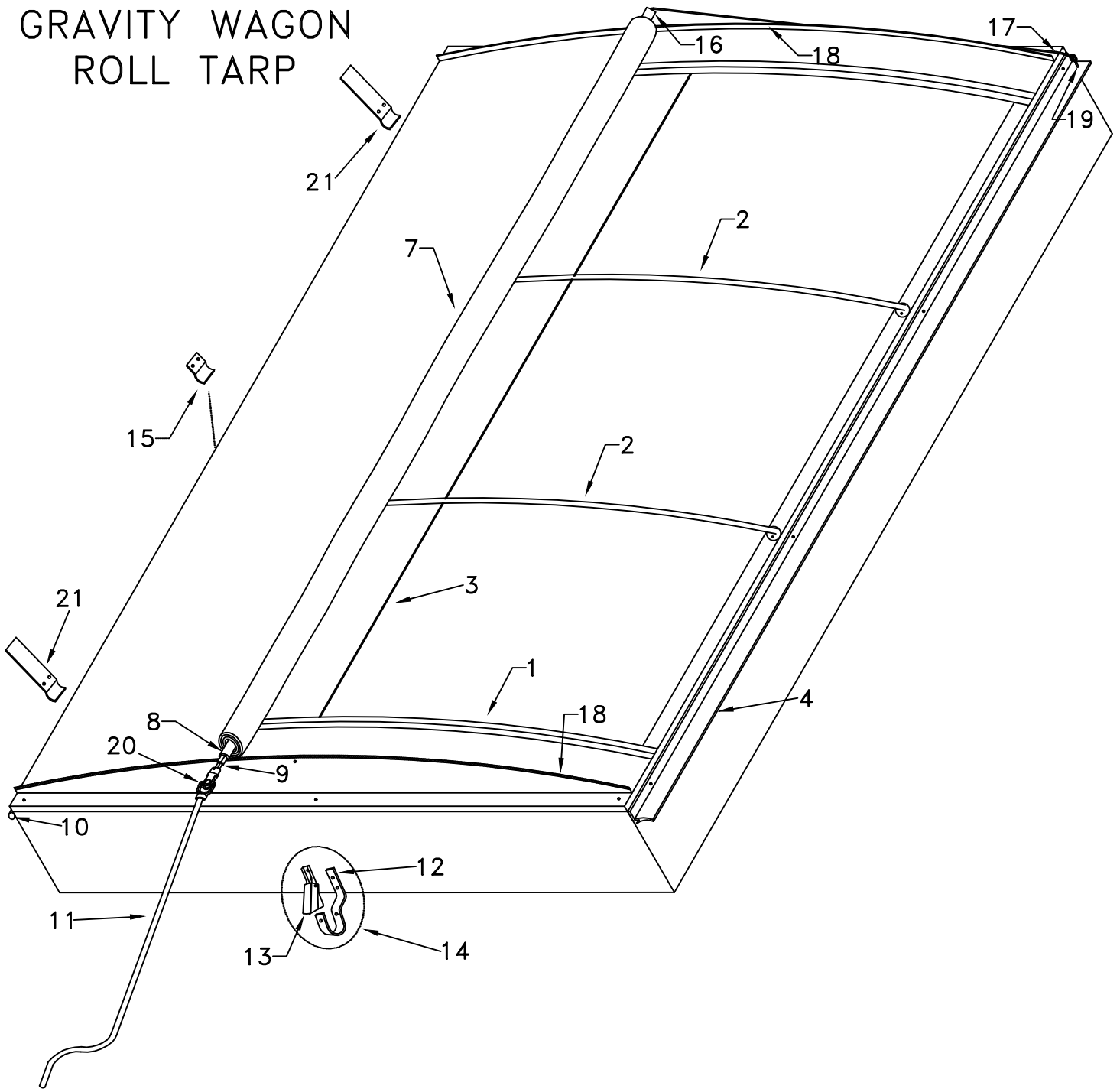


| # | Description | Part # |
|----|--------------------------------|--------|
| 1 | 1" Bearing | 61001 |
| 2 | Bearing Flange | 61003 |
| 3 | Replacement Flex w/ Rivets | 61240 |
| 4 | 12' Auger Tube | 61201 |
| 4 | 14' Auger Tube | 61041 |
| 4 | 16' Auger Tube | 61043 |
| 5 | 12' Auger Screw | 61202 |
| 5 | 14' Auger Screw | 61042 |
| 5 | 16' Auger Screw | 61044 |
| 6 | Control Rod Bracket | 61212 |
| 7 | Pulley Brckt. & Trnsprt. Latch | 61032 |
| 8 | 2-1/2" Pulley & Chain | 61220 |
| 9 | Winch Bracket | 61216 |
| 10 | Brake Winch | 61215 |
| 11 | Rope & Pulley Kit | 61242 |

| # | Description | Part # |
|----|------------------------------------|--------|
| 12 | Flange Clamp | 61205 |
| 13 | Hopper Side Plate | 61013 |
| 14 | Hopper Rod | 61014 |
| 15 | Cotter Pin | 1045 |
| 16 | Hyd. Motor for Bolt-on Valve | 61227 |
| | Seal Kit for Rd. 7-bolt Motor N.S. | 61235 |
| | Seal Kit for Sq. 4-bolt Motor O.S. | 61225 |
| 17 | U-bolt | 61024 |
| 18 | Clean-out Door | 61222 |
| 19 | Valve Lever | 61025 |
| 20 | Control Valve, Direct Mount | 61228 |
| 21 | Motor Plate | 61206 |
| 22 | 12' Fiberglass Control Rod | 61211 |
| 22 | 14' Fiberglass Control Rod | 61213 |
| 22 | 16' Fiberglass Control Rod | 61214 |

| # | Description | Part # |
|----|---------------------------|--------|
| 23 | Control Rod Plate | 61023 |
| 24 | Hopper | 61203 |
| 25 | Winch Cable Assembly | 61218 |
| 26 | 1/2" X 4" Eye Bolt | 61026 |
| 27 | Eye Bolt Support Washer | 61027 |
| 28 | Transport Bracket | 61028 |
| 29 | 1/2" X 1" Set Screw | 61029 |
| 30 | Transport Cradle | 61030 |
| 31 | 1" Lock Collar | 61031 |
| 32 | Spout Clamp | 61047 |
| 33 | 3-1/2" Pulley | 61251 |
| 34 | Attachment Cable Assembly | 61252 |
| 35 | Holder Clamp | 61048 |
| 36 | Spring Snap Link | 61049 |

GRAVITY WAGON ROLL TARP



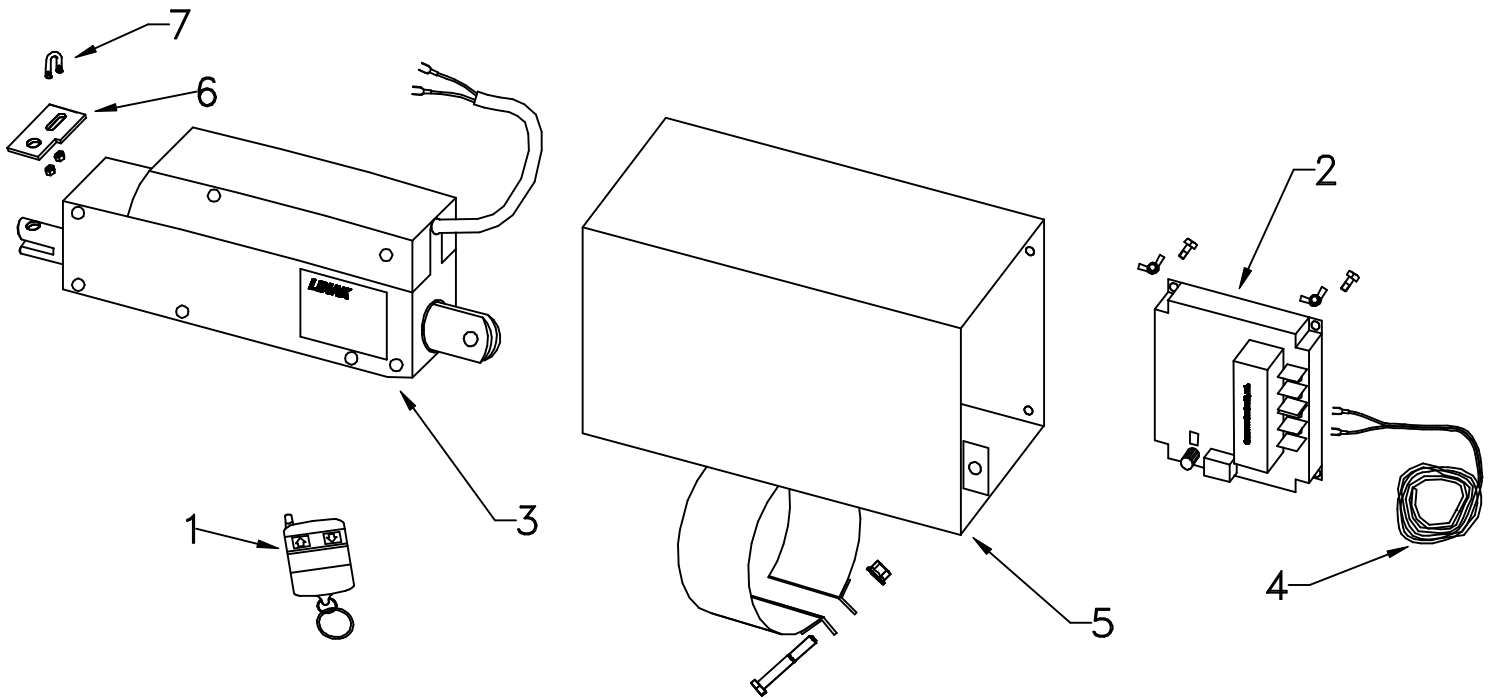
For Model #: **230** **3400** **500**

| # | Description | Part # | | |
|----|-------------------|--------|------|------|
| 1 | Arched End Cap | 4870 | 4870 | 4870 |
| 2 | Roll Tarp Bow | 4874 | 4874 | 4874 |
| 3 | Center Rod | 4882 | 4883 | 4885 |
| 4 | Latch Plate | 4812 | 4813 | 4815 |
| 7 | Replacement Tarp | 4892 | 4893 | 4895 |
| 8 | Roll Tube | 4832 | 4833 | 4835 |
| 9 | Square Drive Tube | 4839 | 4839 | 4839 |
| 10 | Fastening Pipe | 4862 | 4863 | 4863 |
| 11 | Crank | 4842 | 4845 | 4845 |

For Model #: **ALL**

| | | |
|----|-------------------------|-------|
| 12 | Crank Retainer | 50849 |
| 13 | Crank Retainer Latch | 4920 |
| 14 | Crank Retainer Assembly | 4925 |
| 15 | Tarp Clamp | 4851 |
| 16 | Roll Plug | 4858 |
| 17 | Bunge Cord | 4859 |
| 18 | Edge Trim | 4860 |
| 19 | Eye Bolt | 4868 |
| 20 | U-Joint | 4840 |
| 21 | Tarp Stop | 50850 |

WIRELESS REMOTE KIT



| # | Description | Part # |
|---|---------------------------|--------|
| 1 | Keyfob Remote Transmitter | 62001 |
| 2 | Remote Receiver | 62003 |
| 3 | Linear Actuator | 62005 |
| 4 | Power Cord | 62007 |

| # | Description | Part # |
|---|-------------------------|--------|
| 5 | Wireless Remote Bracket | 62008 |
| 6 | Control Rod Plate | 61023 |
| 7 | U-Bolt | 61024 |

Installation Instructions:

1. Mount unit to auger approximately 2' from bottom end.
2. Insert the auger control rod thru the square tube in the center of unit. Adjust the unit so it lines up straight with the control rod.
3. Adjust the arm on the control valve out so that it takes a 2-1/4" stroke to go from fully closed to fully open.
4. With the actuator retracted and the control rod pulled up, fasten the actuator rod to the control rod with the U-bolt.
5. Connect power cord to 12 volt DC power source. The smooth insulated wire is +, the ribbed wire is ground.
6. Press button on transmitter and hold until full stroke is completed.

Transmitter & receiver are programmed to work together. Should re-programming be needed, follow these instructions:

1. Verify that the DC input power is connected to the receiver.
2. Depress and hold the receiver's "LEARN" pushbutton switch. After the "LEARN" LED illuminates, release the switch.
3. Depress and hold any pushbutton on the remote. Verify that the "LEARN" LED flashes ON and OFF, and then stays ON. This verifies that the receiver has identified the remote being used.
4. After 5-seconds the "LEARN" LED will extinguish.
5. The system is ready for operation. Depress any switch on the remote to verify the operation.